



CIVIL CONSTRUCTION

VOLUME N BID ALTERNATE 14 FIBER OPTIC CONDUIT (LRCI 27)

PLAN PACKAGE INDEX / DESCRIPTION	
CIVIL CONSTRUCTION	BID ALTERNATES
VOLUME 1 - EXISTING CONDITIONS & REMOVALS	VOLUME A - NOT USED
VOLUME 2A - CIVIL	VOLUME B - NOT USED
VOLUME 2B - CIVIL	VOLUME C - BID ALTERNATE 3 (LRCI 5) ▲
VOLUME 3A - TRACKWORK	VOLUME D - BID ALTERNATE 4 (LRCI 6) ▲
VOLUME 3B - TRACKWORK	VOLUME E - BID ALTERNATE 5 (LRCI 7) ▲
VOLUME 3C - TRACKWORK DETAILS	VOLUME F - BID ALTERNATE 6 (LRCI 8) ▲
VOLUME 4A - BRIDGES	VOLUME G - BID ALTERNATE 7 (LRCI 4) ▲
VOLUME 4B - BRIDGES	VOLUME H - BID ALTERNATE 8 (LRCI 10) ▲
VOLUME 4C - BRIDGES	VOLUME I - BID ALTERNATE 9 (LRCI 11) ▲
VOLUME 4D - BRIDGES	VOLUME J - BID ALTERNATE 10 (LRCI 12)
VOLUME 4E - BRIDGES	VOLUME K - BID ALTERNATE 11 (LRCI 13)
VOLUME 4F - BRIDGES	VOLUME L - BID ALTERNATE 12 (LRCI 14)
VOLUME 4G - BRIDGES	VOLUME M - BID ALTERNATE 13 (LRCI 26)
VOLUME 5 - TUNNELS	VOLUME N - BID ALTERNATE 14 (LRCI 27)
VOLUME 6 - RETAINING WALLS	VOLUME O - BID ALTERNATE 15 (LRCI 17)
VOLUME 7 - UTILITIES	VOLUME P - BID ALTERNATE 20 (LRCI 32)
VOLUME 8 - DRAINAGE	VOLUME Q - BID ALTERNATE 21 (LRCI 33)
VOLUME 9 - URBAN DESIGN / LANDSCAPE	
VOLUME 10A - TRAFFIC	
VOLUME 10B - LIGHTING *	
VOLUME 11A - STATIONS ▲	
VOLUME 11B - STATIONS	
VOLUME 11C - STATIONS	
VOLUME 11D - STATIONS	
VOLUME 11E - STATIONS	
VOLUME 12 - SYSTEMS	

* TO BE SUBMITTED AT A LATER DATE
 ▲ SUBMITTED AT 75%, NOT INCLUDED IN 90%

THE PROPOSED SOUTHWEST LRT PROJECT IS NOT FINAL BUT IS STILL UNDER ENVIRONMENTAL REVIEW AND THE PROJECT IS SUBJECT TO CHANGE. THESE PLANS ARE NOT FINAL.

THE COUNCIL, THROUGH THE DEVELOPMENT OF THESE PLANS, DOES NOT INTEND THAT THEY WILL PREJUDICE OR COMPROMISE ANY STATE OR FEDERAL ENVIRONMENTAL REVIEW OR OTHER LEGAL REQUIREMENTS. THESE PLANS DO NOT LIMIT THE PROJECT DESIGN ALTERNATIVES OR MITIGATIVE MEASURES THAT THE COUNCIL MAY UNDERTAKE IF THE PROPOSED SWLRT PROJECT PROCEEDS TO CONSTRUCTION.

THE COUNCIL WILL NOT TAKE FINAL ACTION ON THIS MATTER UNLESS THE COUNCIL PROCEEDS WITH THE PROJECT AFTER THE FTA'S RECORD OF DECISION AND THE COUNCIL'S DETERMINATION OF ADEQUACY.

WARNING: THIS RECORD MAY CONTAIN SENSITIVE SECURITY INFORMATION THAT IS CONTROLLED UNDER 49 CFR PARTS 15 AND 1520. NO PART OF THIS RECORD MAY BE DISCLOSED TO PERSONS WITHOUT A "NEED TO KNOW", AS DEFINED IN 49 CFR PARTS 15 AND 1520, EXCEPT WITH THE WRITTEN PERMISSION OF THE ADMINISTRATOR OF THE TRANSPORTATION SECURITY ADMINISTRATION OR THE SECRETARY OF TRANSPORTATION. UNAUTHORIZED RELEASE MAY RESULT IN CIVIL PENALTY OR OTHER ACTION. FOR U.S. GOVERNMENT AGENCIES, PUBLIC DISCLOSURE IS GOVERNED BY 5 U.S.C. 552 AND 49 CFR PARTS 15 AND 1520.

90% SUBMISSION
 DATE : 01/22/16

HENNEPIN COUNTY

APPROVED: _____ DATE: _____



Jan, 21 2016 09:06 pm v:\3400_ADC\CAD\CAD MANAGEMENT\DRAWING LIST\COVER SHEETS 90%\90% GEN-IDX-LRCl.dwg By: v-kriewomr

CIVIL CONSTRUCTION						CIVIL CONSTRUCTION						CIVIL CONSTRUCTION					
SHT #	SHEET NAME	SHEET DESCRIPTION	STATION	STATION	REV	SHT #	SHEET NAME	SHEET DESCRIPTION	STATION	STATION	REV	SHT #	SHEET NAME	SHEET DESCRIPTION	STATION	STATION	REV
VOLUME N																	
1	00-GEN-CVR-001	COVER SHEET															
2	00-GEN-IDX-001	VOLUME INDEX OF PLAN SHEETS															
3	W0-GEN-KEY-001	GENERAL KEY MAP SHEET 1															
4	E0-GEN-KEY-002	GENERAL KEY MAP SHEET 2															
5	W1-SYS-SWE-PRF-001-LRCl-027	SYSTEMWIDE ELECTRICAL PLAN AND PROFILE	2077+80	2084+00													
6	W1-SYS-SWE-SCH-001-LRCl-027	SYSTEMWIDE ELECTRICAL SCHEDULE	2077+80	2084+00													
7	W1-SYS-SWE-PRF-010-LRCl-027	SYSTEMWIDE ELECTRICAL PLAN AND PROFILE	2133+50	2140+50													
8	W1-SYS-SWE-SCH-010-LRCl-027	SYSTEMWIDE ELECTRICAL SCHEDULE	2133+50	2140+50													
9	W2-SYS-SWE-PRF-006-LRCl-027	SYSTEMWIDE ELECTRICAL PLAN AND PROFILE	2240+50	2247+50													
10	W2-SYS-SWE-SCH-006-LRCl-027	SYSTEMWIDE ELECTRICAL SCHEDULE	2240+50	2247+50													
11	W2-SYS-SWE-PRF-008-LRCl-027	SYSTEMWIDE ELECTRICAL PLAN AND PROFILE	2254+50	2261+50													
12	W2-SYS-SWE-SCH-008-LRCl-027	SYSTEMWIDE ELECTRICAL SCHEDULE	2254+50	2261+50													
13	E1-SYS-SWE-PRF-001-LRCl-027	SYSTEMWIDE ELECTRICAL PLAN AND PROFILE	2496+00	2502+50													
14	E1-SYS-SWE-SCH-001-LRCl-027	SYSTEMWIDE ELECTRICAL SCHEDULE	2496+00	2502+50													
15	E1-SYS-SWE-PRF-006-LRCl-027	SYSTEMWIDE ELECTRICAL PLAN AND PROFILE	2529+50	2536+00													
16	E1-SYS-SWE-SCH-006-LRCl-027	SYSTEMWIDE ELECTRICAL SCHEDULE	2529+50	2536+00													
17	E1-SYS-SWE-PRF-013-LRCl-027	SYSTEMWIDE ELECTRICAL PLAN AND PROFILE	2573+50	2580+50													
18	E1-SYS-SWE-SCH-013-LRCl-027	SYSTEMWIDE ELECTRICAL SCHEDULE	2573+50	2580+50													
19	E2-SYS-SWE-PRF-006-LRCl-027	SYSTEMWIDE ELECTRICAL PLAN AND PROFILE	2630+00	2637+00													
20	E2-SYS-SWE-SCH-006-LRCl-027	SYSTEMWIDE ELECTRICAL SCHEDULE	2630+00	2637+00													
21	E2-SYS-SWE-PRF-015-LRCl-027	SYSTEMWIDE ELECTRICAL PLAN AND PROFILE	2687+00	2694+00													
22	E2-SYS-SWE-SCH-015-LRCl-027	SYSTEMWIDE ELECTRICAL SCHEDULE	2687+00	2694+00													
23	E3-SYS-SWE-PRF-025-LRCl-027	SYSTEMWIDE ELECTRICAL PLAN AND PROFILE	2764+50	2774+00													
24	E3-SYS-SWE-PRF-026-LRCl-027	SYSTEMWIDE ELECTRICAL PLAN AND PROFILE	2773+50	2782+00													
25	E3-SYS-SWE-PRF-007-LRCl-027	SYSTEMWIDE ELECTRICAL PLAN AND PROFILE	2785+00	2791+50													
26	E3-SYS-SWE-PRF-008-LRCl-027	SYSTEMWIDE ELECTRICAL PLAN AND PROFILE	2791+50	2798+00													
27	E3-SYS-SWE-SCH-008-LRCl-027	SYSTEMWIDE ELECTRICAL SCHEDULE	2791+50	2798+00													
28	E4-SYS-SWE-PRF-006-LRCl-027	SYSTEMWIDE ELECTRICAL PLAN AND PROFILE	2871+50	2879+00													
29	E4-SYS-SWE-SCH-006-LRCl-027	SYSTEMWIDE ELECTRICAL SCHEDULE	2871+50	2879+00													
30	E4-SYS-SWE-PRF-027-LRCl-027	SYSTEMWIDE ELECTRICAL PLAN AND SCHEDULE	2925+00	2933+00													
31	E4-SYS-SWE-PRF-028-LRCl-027	SYSTEMWIDE ELECTRICAL PLAN AND SCHEDULE	2933+00	2940+00													
32	E4-SYS-SWE-PRF-019-LRCl-027	SYSTEMWIDE ELECTRICAL PLAN AND PROFILE	2955+50	2962+34.54													
33	E4-SYS-SWE-SCH-019-LRCl-027	SYSTEMWIDE ELECTRICAL SCHEDULE	2955+50	2962+34.54													

NO.	DATE	BY	CHECK	DESIGN	REVISION / SUBMITTAL



90% SUBMISSION - 01/22/16

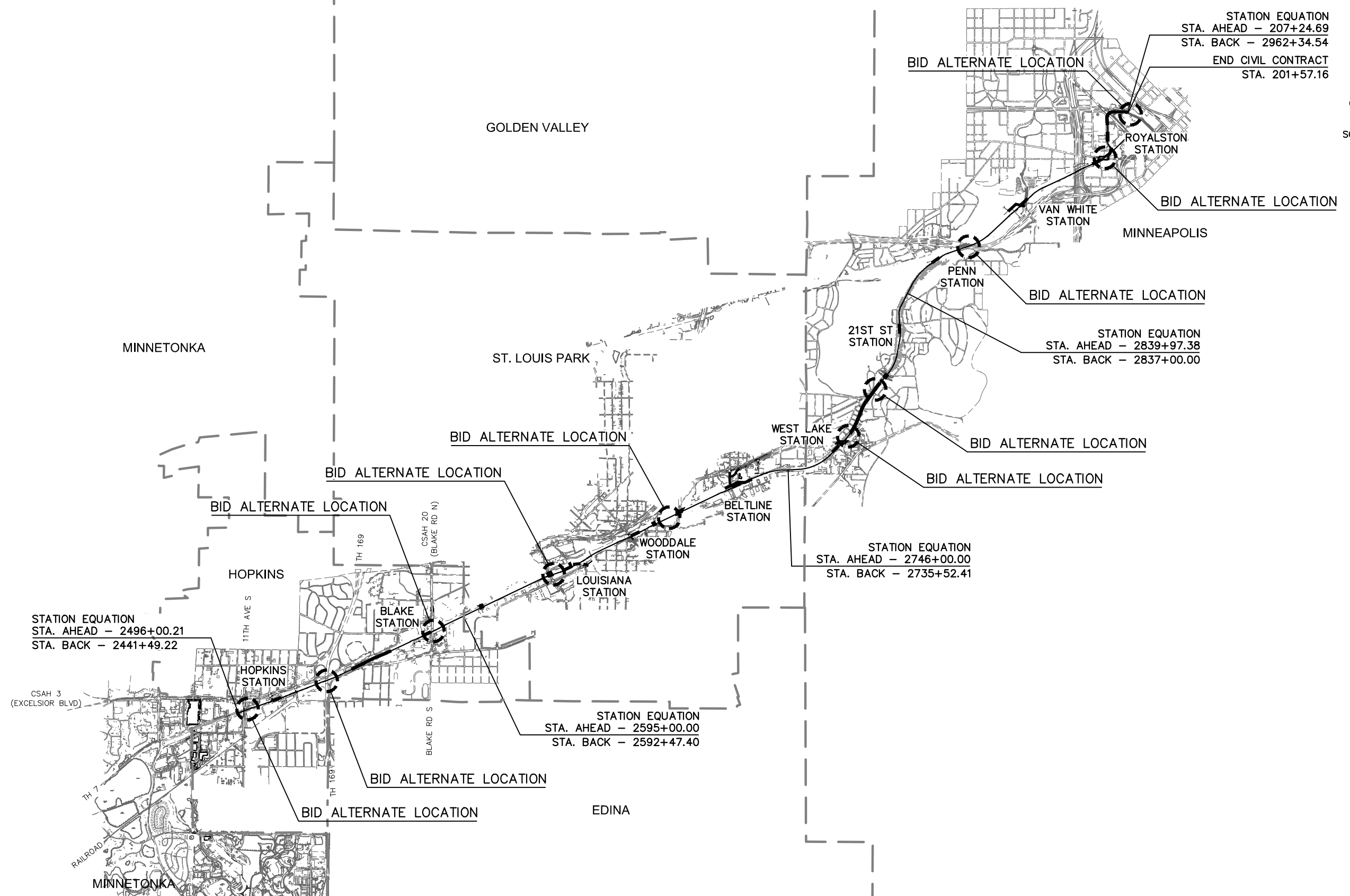



CIVIL (BA14)
FIBER OPTIC CONDUIT
VOLUME INDEX OF PLAN SHEETS

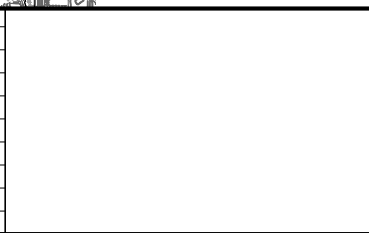
DISCIPLINE: **GENERAL** SHEET NAME: **00-GEN-IDX-001**

SHEET
2
OF
33

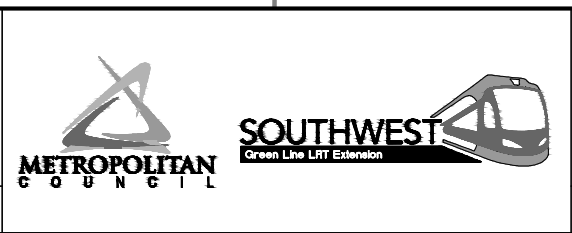
Jan, 18 2016 11:00 am v:\3400_ADC\CAD\CAD MANAGEMENT\DRAWING LIST\COVER SHEETS 90%_E0-GEN-KEY-LRCI-90.dwg By: V-KrivaMR



NO.	DATE	BY	CHECK/DESIGN	REVISION / SUBMITTAL



90% SUBMISSION - 01/22/16



**CIVIL (BA14)
 FIBER OPTIC CONDUIT
 GENERAL KEY MAP
 SHEET 2**

DISCIPLINE: GENERAL
 SHEET NAME: E0-GEN-KEY-002

**SHEET
 4
 OF
 33**

Jan. 18 2016 09:48 am V:\3400_ADC\CAD\LRCI\027\PLAN SHEETS\W1-SYS-SWE-SCH-LRCI-027.dwg By: V-TranTT

SYSTEMS DEVICE SCHEDULE				
DEVICE ID	TRACK 2 CL STATIONING	TRACK 2 CL OFFSET	DEVICE DETAIL# / REFERENCE DRAWING	SPECIAL NOTES
SC-MH-2081	2081+46	22.5' L	SWE-DTL-003	SC MANHOLE
SC-MH-2081-1	2081+61	42.0' L	SWE-DTL-003	SC MANHOLE
SC-MH-2081-2	2081+46	8.0' R	SWE-DTL-003	SC MANHOLE
SC-HH-2081	2081+61	48.0' L	SWE-DTL-005	SC HANDHOLE
SC-HH-2082-1	2082+04	22.5' L	SWE-DTL-005	SC HANDHOLE
SC-HH-2082-2	2082+85	22.5' L	SWE-DTL-005	SC HANDHOLE
SC-HH-2083	2083+86	22.5' L	SWE-DTL-005	SC HANDHOLE
TE-MH-2081	2081+94	65.0' L	SWE-DTL-002	TE MANHOLE
TE-MH-2082	2082+97	18.0' R	SWE-DTL-002	TE MANHOLE
FDN-2081	2081+83	54.0' L	SWE-DTL-SIG-013	SC HOUSE FOUNDATION
FDN-2082	2082+89	7.3' R	SWE-DTL-SIG-016	SWITCH HEATER FOUNDATION AND STUB UP
SF-2081-1	2081+19	21.0' L	SWE-DTL-SIG-005	SIGNAL FOUNDATION AND STUB UP
SF-2081-2	2081+19	7.0' L	SWE-DTL-SIG-005	SIGNAL FOUNDATION AND STUB UP
PF-2081-1	2081+42	27.5' L	SWE-DTL-SIG-006	LRT FLASHER FOUNDATION AND STUB UP
PF-2081-2	2081+42	13.5' R	SWE-DTL-SIG-006	LRT FLASHER FOUNDATION AND STUB UP
JB-2078-1	2078+18	19.0' L	1/SWE-DTL-SIG-024	TRACK CIRCUIT LEADS JUNCTION BOX
JB-2078-2	2078+18	5.0' R	1/SWE-DTL-SIG-024	TRACK CIRCUIT LEADS JUNCTION BOX
JB-2080-1	2080+80	17.0' L	SWE-DTL-SIG-003	TWC ANTENNA JUNCTION BOX
JB-2080-2	2080+80	3.0' R	SWE-DTL-SIG-003	TWC ANTENNA JUNCTION BOX
JB-2081-1	2081+46	19.0' L		LV JUNCTION BOX
JB-2081-3	2081+08	19.0' L	B/SWE-DTL-SIG-003	SINGLE IMPEDANCE BOND JUNCTION BOX
JB-2081-4	2081+08	5.0' R	B/SWE-DTL-SIG-003	SINGLE IMPEDANCE BOND JUNCTION BOX
JB-2081-5	2081+13	19.0' L	1/SWE-DTL-SIG-024	TRACK CIRCUIT LEADS JUNCTION BOX
JB-2081-6	2081+13	5.0' R	1/SWE-DTL-SIG-024	TRACK CIRCUIT LEADS JUNCTION BOX
JB-2081-7	2081+18	19.0' L	3/SWE-DTL-SIG-007	WHEEL SENSOR JUNCTION BOX
JB-2081-8	2081+18	5.0' R	3/SWE-DTL-SIG-007	WHEEL SENSOR JUNCTION BOX
JB-2082-1	2082+12	19.0' L	SWE-DTL-SIG-019	SWITCH MACHINE JUNCTION BOX
JB-2082-2	2082+12	5.0' R	SWE-DTL-SIG-019	SWITCH MACHINE JUNCTION BOX
JB-2082-3	2082+22	19.0' L	SWE-DTL-SIG-019	SWITCH HEATER JUNCTION BOX
JB-2082-4	2082+22	5.0' R	SWE-DTL-SIG-019	SWITCH HEATER JUNCTION BOX
JB-2082-5	2082+50	5.0' R	1/SWE-DTL-SIG-024	TRACK CIRCUIT LEADS JUNCTION BOX
JB-2082-6	2082+22	17.0' L	SWE-DTL-SIG-003	TWC ANTENNA JUNCTION BOX
JB-2082-7	2082+22	3.0' R	SWE-DTL-SIG-003	TWC ANTENNA JUNCTION BOX
JB-2083-1	2083+66	19.0' L	SWE-DTL-SIG-019	SWITCH HEATER JUNCTION BOX
JB-2083-2	2083+66	5.0' R	SWE-DTL-SIG-019	SWITCH HEATER JUNCTION BOX
JB-2083-3	2083+76	19.0' L	SWE-DTL-SIG-019	SWITCH MACHINE JUNCTION BOX
JB-2083-4	2083+76	5.0' R	SWE-DTL-SIG-019	SWITCH MACHINE JUNCTION BOX
JB-2083-5	2083+98	19.0' L	B/SWE-DTL-SIG-003	SINGLE IMPEDANCE BOND JUNCTION BOX
JB-2083-6	2083+98	5.0' R	B/SWE-DTL-SIG-003	SINGLE IMPEDANCE BOND JUNCTION BOX
JB-2083-7	2083+40	5.0' R	1/SWE-DTL-SIG-024	TRACK CIRCUIT LEADS JUNCTION BOX
CSU-2079-1	2079+04	33.0' L	3/SWE-DTL-012	COMMUNICATION CABINET CONDUIT STUB UP
CSU-2079-2	2079+04	19.0' R	3/SWE-DTL-012	COMMUNICATION CABINET CONDUIT STUB UP
CSU-2080	2080+50	20.0' R	3/SWE-DTL-012	ELECTRICAL CABINET CONDUIT STUB UP
CSU-2082-2	2082+29	8.0' R	3/SWE-DTL-014	SWITCH HEATER OCS POLE CONDUIT STUB UP
CSU-2082-3	2082+94	25.0' L	1/SWE-DTL-014	FEEDER POLE CONDUIT STUB UP
CSU-2082-4	2082+95	8.0' R	1/SWE-DTL-014	FEEDER POLE CONDUIT STUB UP
CSU-2082-5	2082+24	24.5' L		INTRUSION DETECTION CONDUIT STUB UP
CSU-2082-6	2082+24	8.0' R		INTRUSION DETECTION CONDUIT STUB UP
BID-2081-1	2081+07	24.0' L	SWE-DTL-COM-002	BRIDGE INTRUSION DETECTION FOUNDATION AND STUB UP
BID-2081-2	2081+07	10.0' R	SWE-DTL-COM-002	BRIDGE INTRUSION DETECTION FOUNDATION AND STUB UP
SC-HH-2080	2080+43	120.0' L	SWE-DTL-005	SC HANDHOLE
SC-HH-2081-1	2081+61	54.0' L	SWE-DTL-005	SC HANDHOLE

BID ALTERNATE 14

DUCTBANKS/ EXPRESS TROUGH/ CONDUITS					
DUCTBANK, EXPRESS TROUGH OR CONDUIT ID	FROM	TO	CONDUIT QTY-SIZE	DUCTBANK DETAIL # / REFERENCE DRAWING	NOTES
SC-2081-1	SC-MH-2081	SC-MH-2081-1	16-4	16/STU-DTL-001	MAINLINE SC DUCTBANK
SC-2081-2	SC-MH-2081	SC-MH-2081-2	16-4	16/STU-DTL-001	MAINLINE SC DUCTBANK
SC-2079-1	CSU-2079-1	SC-MH-2081	3-4	STU-DTL-001	SC CONDUIT
SC-2079-2	CSU-2079-2	SC-MH-2081-2	3-4	STU-DTL-001	SC CONDUIT
SC-2081-3	SC-MH-2081	JB-2080-1	1-2	STU-DTL-001	SC CONDUIT
SC-2081-4	SC-MH-2081-2	SF-2081-2	1-2	STU-DTL-001	SC CONDUIT
SC-2081-5	SC-MH-2081-2	JB-2080-2	1-2	STU-DTL-001	SC CONDUIT
SC-2081-6	SC-MH-2081-2	PF-2081-2	1-4	STU-DTL-001	SC CONDUIT
SC-2081-7	SC-MH-2081	SF-2081-1	1-2	STU-DTL-001	SC CONDUIT
SC-2081-13	SC-HH-2082-1	JB-2082-1	1-3	STU-DTL-001	SC CONDUIT
SC-2081-14	SC-HH-2082-1	JB-2082-2	1-3	STU-DTL-001	SC CONDUIT
SC-2081-15	SC-MH-2081	JB-2081-3	1-2	STU-DTL-001	SC CONDUIT
SC-2081-16	SC-MH-2081-2	JB-2081-4	1-2	STU-DTL-001	SC CONDUIT
SC-2081-17	SC-MH-2081	JB-2081-5	1-2	STU-DTL-001	SC CONDUIT
SC-2081-18	SC-MH-2081-2	JB-2081-6	1-2	STU-DTL-001	SC CONDUIT
SC-2081-19	SC-MH-2081	JB-2081-7	1-2	STU-DTL-001	SC CONDUIT
SC-2081-20	SC-MH-2081-2	JB-2081-8	1-2	STU-DTL-001	SC CONDUIT
SC-2081-25	SC-MH-2081-1	CSU-2082-5	1-2	STU-DTL-001	SC CONDUIT
SC-2081-26	SC-MH-2081-1	CSU-2082-6	1-2	STU-DTL-001	SC CONDUIT
SC-2081-27	SC-HH-2082-2	JB-2082-5	1-2	STU-DTL-001	SC CONDUIT
SC-2081-28	SC-MH-2081	BID-2081-1	1-2	STU-DTL-001	SC CONDUIT
SC-2081-29	SC-MH-2081-2	BID-2081-2	1-2	STU-DTL-001	SC CONDUIT
SC-2081-30	SC-MH-2081	BID-2081-3	1-2	STU-DTL-001	SC CONDUIT
SC-2081-31	SC-MH-2081-2	BID-2081-4	1-2	STU-DTL-001	SC CONDUIT
SC-2081-32	SC-MH-2081	PF-2081-1	1-4	STU-DTL-001	SC CONDUIT
SC-2081-33	SC-MH-2081-3	JB-2078-1	1-2	STU-DTL-001	SC CONDUIT
SC-2081-34	SC-MH-2081-3	JB-2078-2	1-2	STU-DTL-001	SC CONDUIT
SC-2081-35	SC-HH-2082-1	JB-2082-6	1-2	STU-DTL-001	SC CONDUIT
SC-2081-36	SC-HH-2082-1	JB-2082-7	1-2	STU-DTL-001	SC CONDUIT
SC-2082-1	SC-HH-2083	JB-2083-3	1-3	STU-DTL-001	SC CONDUIT
SC-2082-2	SC-HH-2083	JB-2083-4	1-3	STU-DTL-001	SC CONDUIT
SC-2082-3	SC-HH-2083	JB-2083-5	1-2	STU-DTL-001	SC CONDUIT
SC-2082-4	SC-HH-2083	JB-2083-6	1-2	STU-DTL-001	SC CONDUIT
SC-2082-5	SC-HH-2083	JB-2083-7	1-2	STU-DTL-001	SC CONDUIT
SC-2082-6	SC-HH-2082-2	FDN-2082	1-3	STU-DTL-001	SC CONDUIT
ET-2081	SC-MH-2081	SC-HH-2082-1	TYPE IV	4/SWE-DTL-010	EXPRESS TROUGH
ET-2082-1	SC-HH-2082-1	SC-HH-2082-2	TYPE IV	4/SWE-DTL-010	EXPRESS TROUGH
ET-2082-2	SC-HH-2082-2	SC-HH-2083	TYPE IV	4/SWE-DTL-010	EXPRESS TROUGH
ET-2083	SC-HH-2083	SC-HH-2088	TYPE IV	4/SWE-DTL-010	EXPRESS TROUGH
TE-2081	TE-MH-2081	TE-MH-2082	10-5	10/STU-DTL-002	TE DUCTBANK
TE-2082-1	FDN-2082	JB-2082-3	1-2	STU-DTL-002	TE CONDUIT
TE-2082-2	FDN-2082	JB-2082-4	1-2	STU-DTL-002	TE CONDUIT
TE-2082-3	FDN-2082	JB-2083-1	1-2	STU-DTL-002	TE CONDUIT
TE-2082-4	FDN-2082	JB-2083-2	1-2	STU-DTL-002	TE CONDUIT
TE-2082-5	TE-MH-2082	CSU-2082-3	2-4	STU-DTL-002	TE CONDUIT
TE-2082-6	TE-MH-2082	CSU-2082-4	2-4	STU-DTL-002	TE CONDUIT
TE-2082-7	FDN-2082	CSU-2082-2	1-4	STU-DTL-002	TE CONDUIT
LV-2081	JB-2081	CSU-2080	1-2	STU-DTL-001	LV CONDUIT
LV-2079-1	SC-HH-2081	CSU-2079-1	1-2	STU-DTL-001	LV CONDUIT
LV-2079-2	SC-HH-2081	CSU-2079-2	1-2	STU-DTL-001	LV CONDUIT
SC-2080	SC-HH-2081-1	SC-HH-2080	1-4	STU-DTL-001	SC CONDUIT

NO.	DATE	BY	CHECK/DESIGN	REVISION / SUBMITTAL

AECOM

90% SUBMISSION - 01/22/16

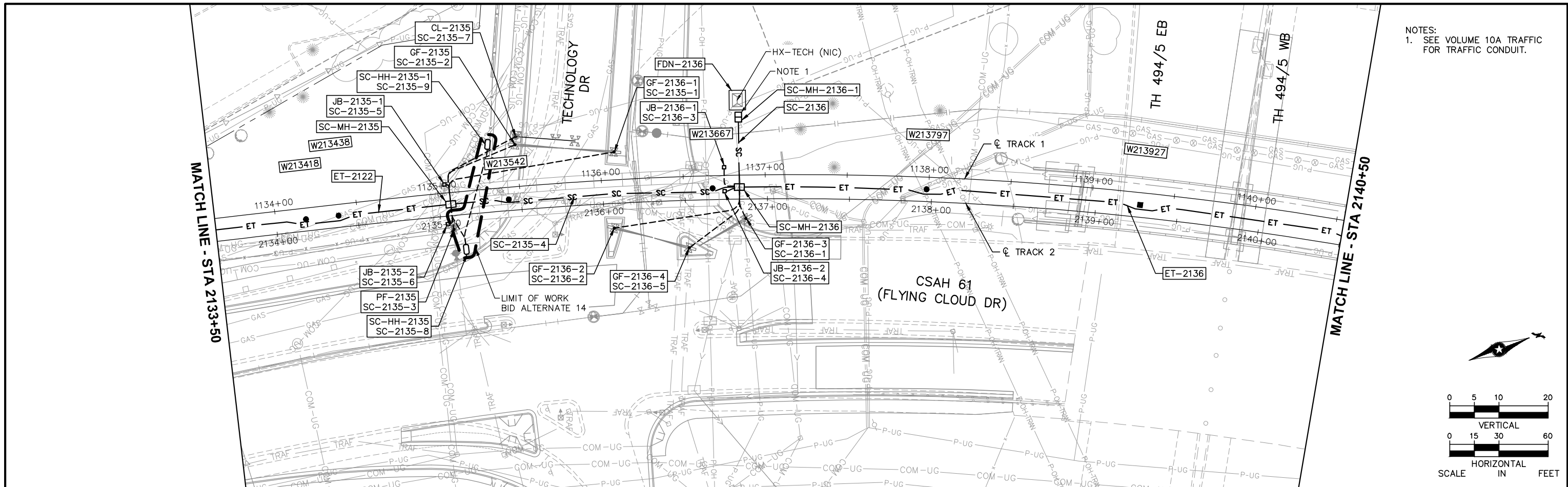



CIVIL (BA14)
SYSTEMWIDE ELECTRICAL SCHEDULE
STA 2077+80 TO STA 2084+00

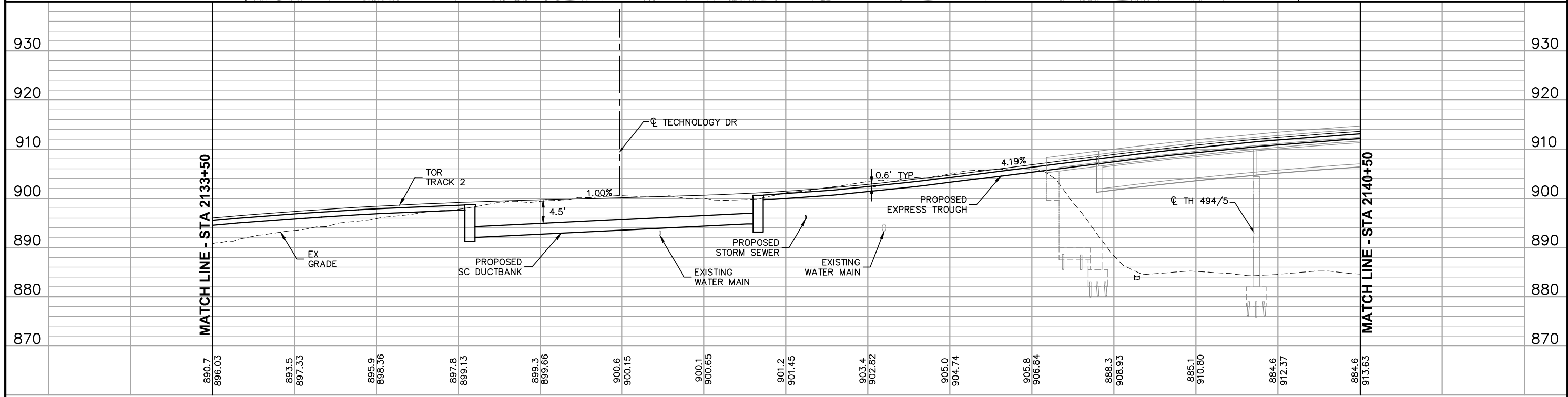
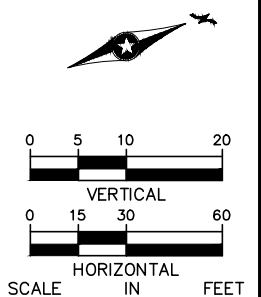
DISCIPLINE: **SYSTEMS** SHEET NAME: **W1-SYS-SWE-SCH-001-LRCI-027**

SHEET
6
OF
33

Jan, 18 2016 09:53 am V:\3400_ADC\CAD\LRCI\LRG-027\PLAN SHEETS\W1-SYS-SWE-PRF-LRCI-027.dwg By: V-TranIT



NOTES:
1. SEE VOLUME 10A TRAFFIC FOR TRAFFIC CONDUIT.



890.7 896.03	893.5 897.33	895.9 896.36	897.8 899.13	899.3 899.66	900.6 900.15	900.1 900.65	901.2 901.45	903.4 902.82	905.0 904.74	905.8 906.84	888.3 908.93	885.1 910.80	884.6 912.37	884.6 913.63
2134+00		2135+00		2136+00		2137+00		2138+00		2139+00		2140+00		

NO.	DATE	BY	CHECK/DESIGN	REVISION / SUBMITTAL

AECOM

90% SUBMISSION - 01/22/16

CIVIL (BA14)
SYSTEMWIDE ELECTRICAL
PLAN AND PROFILE
STA 2133+50 TO STA 2140+50

DISCIPLINE: **SYSTEMS** SHEET NAME: **W1-SYS-SWE-PRF-010-LRCI-027**

SHEET **7** OF **33**

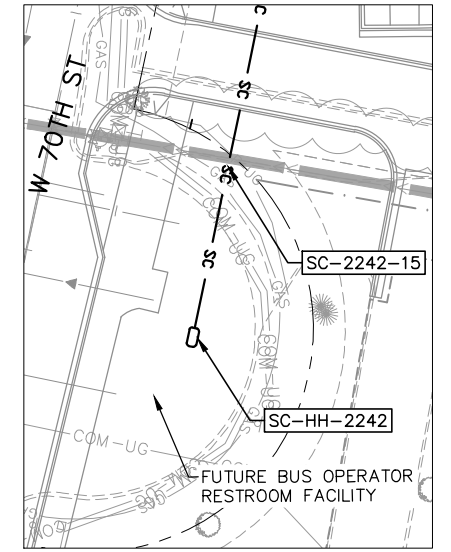
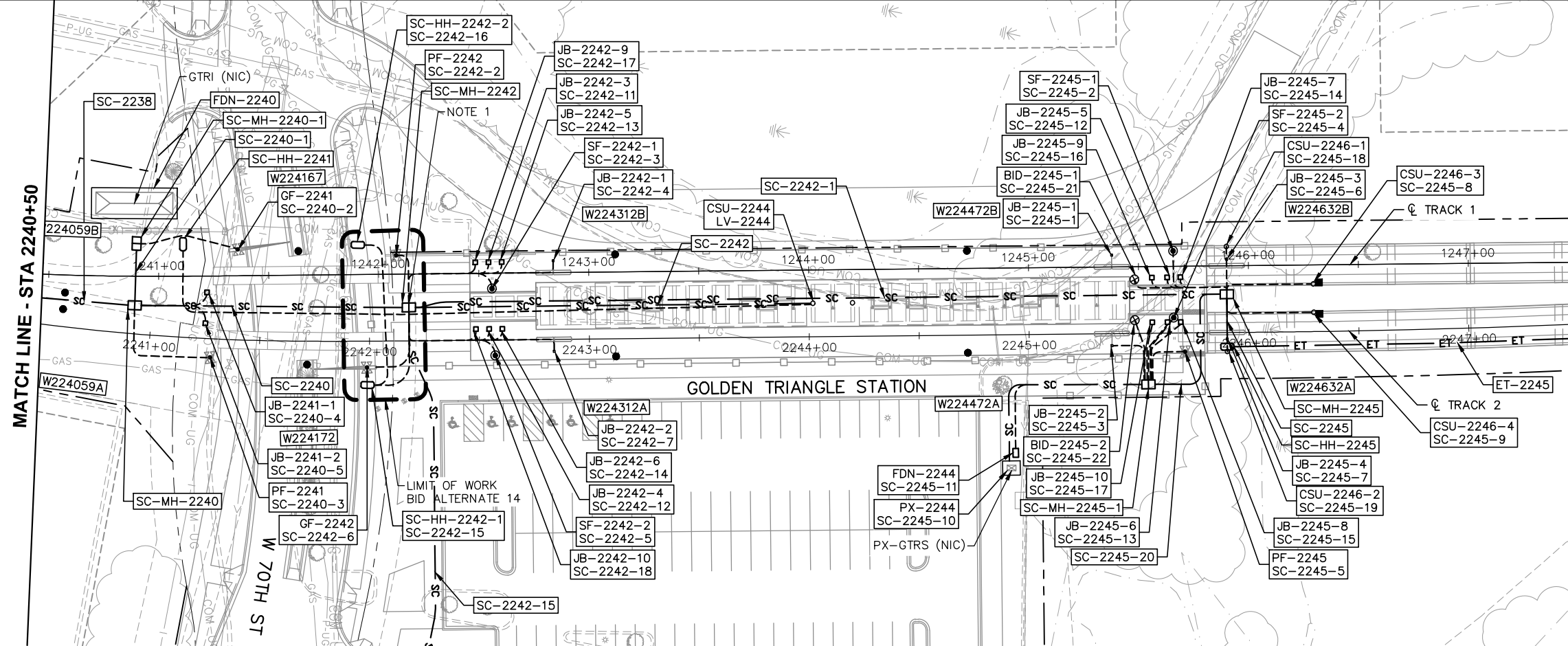
Jan, 18 2016 10:28 am V:\3400_ADC\CAD\LRCI\027\PLAN SHEETS\W2-SYS-SWE-PRF-LRCI-027.dwg By: V-TronIT

MATCH LINE - STA 2240+50

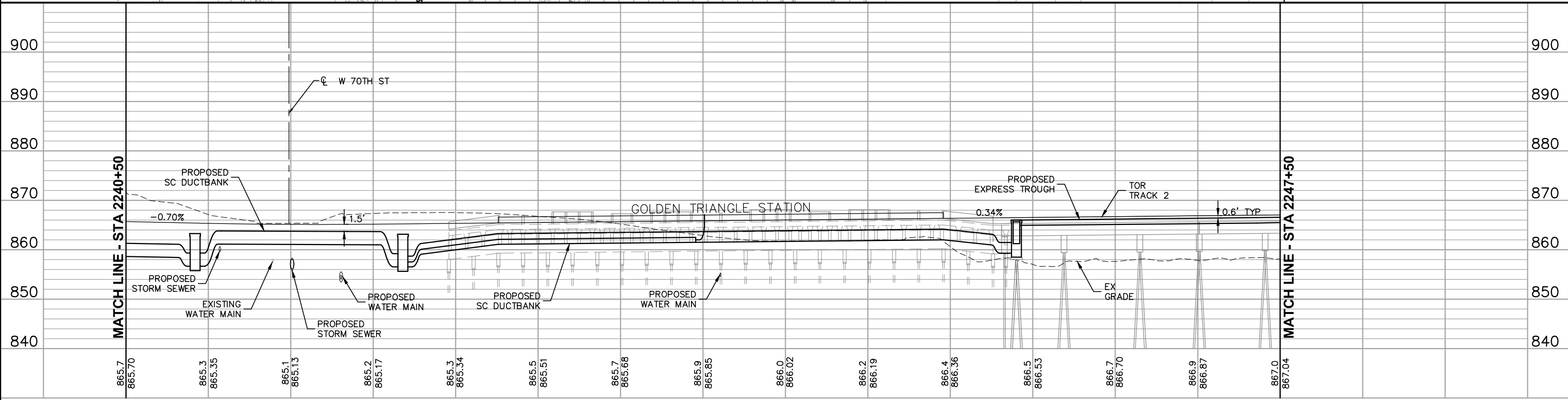
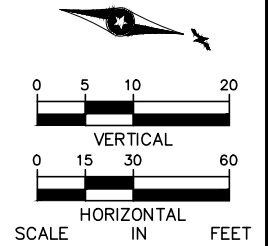
MATCH LINE - STA 2240+50

MATCH LINE - STA 2247+50

MATCH LINE - STA 2247+50



NOTES:
1. SEE VOLUME 10B LIGHTING SHEET W2-GLT-ELE-PLN-101 FOR CONDUIT ROUTING TO PARK AND RIDE COMMUNICATIONS CABINET.



865.7 865.70	865.3 865.35	865.1 865.13	865.2 865.17	865.3 865.34	865.5 865.51	865.7 865.68	865.9 865.85	866.0 866.02	866.2 866.19	866.4 866.36	866.5 866.53	866.7 866.70	866.9 866.87	867.0 867.04
2241+00			2242+00		2243+00		2244+00		2245+00		2246+00		2247+00	

NO.	DATE	BY	CHECK/DESIGN	REVISION / SUBMITTAL



90% SUBMISSION - 01/22/16



CIVIL (BA14)
SYSTEMWIDE ELECTRICAL
PLAN AND PROFILE
STA 2240+50 TO STA 2247+50

DISCIPLINE: **SYSTEMS** SHEET NAME: **W2-SYS-SWE-PRF-006-LRCI-027**

SHEET **9** OF **33**

Jan. 18 2016 10:30 am V:\34000_ADC\CAD\CAD\LRCI\LRCI-027\PLAN SHEETS\W2-SYS-SWE-SCH-LRCI-027.dwg By: V-TranTT

SYSTEMS DEVICE SCHEDULE				
DEVICE ID	TRACK 2 CL STATIONING	TRACK 2 CL OFFSET	DEVICE DETAIL# / REFERENCE DRAWING	SPECIAL NOTES
SC-MH-2240	2240+92	13.0' L	SWE-DTL-003	SC MANHOLE
SC-MH-2240-1	2240+90	41.0' L	SWE-DTL-003	SC MANHOLE
SC-MH-2242	2242+18	15.0' L	SWE-DTL-003, NOTE 1	SC MANHOLE
SC-MH-2245	2245+90	17.0' L	SWE-DTL-003	SC MANHOLE
SC-MH-2245-1	2245+54	23.0' R	SWE-DTL-003	SC MANHOLE
SC-HH-2241	2241+13	42.0' L	SWE-DTL-005	SC HANDHOLE
SC-HH-2242	2242+03	245.0' R	SWE-DTL-005	SC HANDHOLE
SC-HH-2245	2245+90	6.5' R	SWE-DTL-005	SC HANDHOLE
CSU-2244	2244+02	15.2' L	3/SWE-DTL-012	COMMUNICATION CABINET CONDUIT STUB UP
CSU-2246-1	2245+90	39.0' L		INTRUSION DETECTION CONDUIT STUB UP
CSU-2246-2	2245+90	8.6' R		INTRUSION DETECTION CONDUIT STUB UP
CSU-2246-3	2246+30	37.0' L		INTRUSION DETECTION CONDUIT STUB UP
CSU-2246-4	2246+30	7.0' R		INTRUSION DETECTION CONDUIT STUB UP
FDN-2240	2240+88	59.2' L	SWE-DTL-SIG-014	SC HOUSE FOUNDATION
FDN-2244	2244+91	53.0' R	SWE-DTL-COM-001	INTRUSION DETECTION CABINET FOUNDATION AND STUB UP
PX-2244	2244+91	60.5' R	SWE-DTL-SIG-008	PEDESTRIAN CROSSING CASE FOUNDATION AND STUB UP
PF-2241	2241+28	8.5' R	SWE-DTL-SIG-006	LRT FLASHER FOUNDATION AND STUB UP
PF-2242	2242+12	38.9' L	SWE-DTL-SIG-006	LRT FLASHER FOUNDATION AND STUB UP
PF-2245	2245+71	8.5' R	SWE-DTL-SIG-006	LRT FLASHER FOUNDATION AND STUB UP
SF-2242-1	2242+56	23.4' L	SWE-DTL-SIG-005	SIGNAL FOUNDATION AND STUB UP
SF-2242-2	2242+57	7.0' R	SWE-DTL-SIG-005	SIGNAL FOUNDATION AND STUB UP
SF-2245-1	2245+66	37.4' R	SWE-DTL-SIG-005	SIGNAL FOUNDATION AND STUB UP
SF-2245-2	2245+66	7.0' L	SWE-DTL-SIG-005	SIGNAL FOUNDATION AND STUB UP
JB-2241-1	2241+25	21.0' L	1/SWE-DTL-SIG-024	GRADE CROSSING JUNCTION BOX
JB-2241-2	2241+25	7.0' L	1/SWE-DTL-SIG-024	GRADE CROSSING JUNCTION BOX
JB-2242-1	2242+84	33.5' L	SWE-DTL-SIG-004	TWC ANTENNA JUNCTION BOX
JB-2242-2	2242+84	3.0' R	SWE-DTL-SIG-004	TWC ANTENNA JUNCTION BOX
JB-2242-3	2242+54	35.0' L	1/SWE-DTL-SIG-007	WHEEL SENSOR JUNCTION BOX
JB-2242-4	2242+54	5.0' L	1/SWE-DTL-SIG-007	WHEEL SENSOR JUNCTION BOX
JB-2242-5	2242+60	35.0' L	SWE-DTL-SIG-017	SINGLE IMPEDANCE BOND JUNCTION BOX
JB-2242-6	2242+60	5.0' L	SWE-DTL-SIG-017	SINGLE IMPEDANCE BOND JUNCTION BOX
JB-2242-9	2242+48	35.0' L	1/SWE-DTL-SIG-024	TRACK CIRCUIT LEADS JUNCTION BOX
JB-2242-10	2242+48	5.0' L	1/SWE-DTL-SIG-024	TRACK CIRCUIT LEADS JUNCTION BOX
JB-2245-1	2245+38	33.5' L	SWE-DTL-SIG-003	TWC ANTENNA JUNCTION BOX
JB-2245-2	2245+38	3.0' R	SWE-DTL-SIG-003	TWC ANTENNA JUNCTION BOX
JB-2245-3	2245+90	33.3' L	SWE-DTL-SIG-003	TWC ANTENNA JUNCTION BOX
JB-2245-4	2245+90	3.0' R	SWE-DTL-SIG-003	TWC ANTENNA JUNCTION BOX
JB-2245-5	2245+63	25.0' L	1/SWE-DTL-SIG-024	TRACK CIRCUIT LEADS JUNCTION BOX
JB-2245-6	2245+63	5.0' L	1/SWE-DTL-SIG-024	TRACK CIRCUIT LEADS JUNCTION BOX
JB-2245-7	2245+69	25.0' L	3/SWE-DTL-SIG-007	WHEEL SENSOR JUNCTION BOX
JB-2245-8	2245+69	5.0' L	3/SWE-DTL-SIG-007	WHEEL SENSOR JUNCTION BOX
JB-2245-9	2245+56	25.0' L	B/SWE-DTL-SIG-003	SINGLE IMPEDANCE BOND JUNCTION BOX
JB-2245-10	2245+56	5.0' L	B/SWE-DTL-SIG-003	SINGLE IMPEDANCE BOND JUNCTION BOX
SC-HH-2242-1	2241+99	22.0' R	SWE-DTL-005	SC HANDHOLE
SC-HH-2242-2	2241+95	44.0' L	SWE-DTL-005	SC HANDHOLE

DUCTBANKS/ EXPRESS TROUGH/ CONDUITS					
DUCTBANK, EXPRESS TROUGH OR CONDUIT ID	FROM	TO	CONDUIT QTY-SIZE	DUCTBANK DETAIL # / REFERENCE DRAWING	NOTES
ET-2238	SC-MH-2238	SC-MH-2240	TYPE III	3/SWE-DTL-010	EXPRESS TROUGH
ET-2245	SC-MH-2245	EAST BRIDGE ABUTMENT	TYPE IV	4/SWE-DTL-010	EXPRESS TROUGH
SC-2238	SC-MH-2238	SC-MH-2240	16-4	16/STU-DTL-001	MAINLINE SC DUCTBANK
SC-2240	SC-MH-2240	SC-MH-2242	16-4	16A/STU-DTL-001	MAINLINE SC DUCTBANK
SC-2240-1	SC-MH-2240	SC-MH-2240-1	16-4	16/STU-DTL-001	MAINLINE SC DUCTBANK
SC-2242	SC-MH-2242	CSU-2244	3-4	3/STU-DTL-001	MAINLINE SC DUCTBANK
SC-2242-1	SC-MH-2242	SC-MH-2245	9-4	9/STU-DTL-001	MAINLINE SC DUCTBANK
SC-2242-15	SC-MH-2242	SC-HH-2242	2-4	2/STU-DTL-001	MAINLINE SC DUCTBANK
SC-2245	SC-MH-2245	SC-HH-2245	4-4	4/STU-DTL-001	SC DUCTBANK
SC-2245-10	SC-MH-2245	PX-2244	4-4	4/STU-DTL-001	SC DUCTBANK
SC-2245-20	SC-MH-2245	SC-MH-2245-1	8-4		SC DUCTBANK
SC-2240-2	SC-MH-2240-1	GF-2241	1-4	STU-DTL-001	SC CONDUIT
SC-2240-3	SC-MH-2240	PF-2241	1-4	STU-DTL-001	SC CONDUIT
SC-2240-4	SC-MH-2240	JB-2241-1	1-2	STU-DTL-001	SC CONDUIT
SC-2240-5	SC-MH-2240	JB-2241-2	1-2	STU-DTL-001	SC CONDUIT
SC-2242-2	SC-MH-2242	PF-2242	1-4	STU-DTL-001	SC CONDUIT
SC-2242-3	SC-MH-2242	SF-2242-1	1-2	STU-DTL-001	SC CONDUIT
SC-2242-4	SC-MH-2242	JB-2242-1	1-2	STU-DTL-001	SC CONDUIT
SC-2242-5	SC-MH-2242	SF-2242-2	1-2	STU-DTL-001	SC CONDUIT
SC-2242-6	SC-MH-2242	GF-2242	1-4	STU-DTL-001	SC CONDUIT
SC-2242-7	SC-MH-2242	JB-2242-2	1-2	STU-DTL-001	SC CONDUIT
SC-2242-11	SC-MH-2242	JB-2242-3	1-2	STU-DTL-001	SC CONDUIT
SC-2242-12	SC-MH-2242	JB-2242-4	1-2	STU-DTL-001	SC CONDUIT
SC-2242-13	SC-MH-2242	JB-2242-5	1-2	STU-DTL-001	SC CONDUIT
SC-2242-14	SC-MH-2242	JB-2242-6	1-2	STU-DTL-001	SC CONDUIT
SC-2242-17	SC-MH-2242	JB-2242-9	1-2	STU-DTL-001	SC CONDUIT
SC-2242-18	SC-MH-2242	JB-2242-10	1-2	STU-DTL-001	SC CONDUIT
SC-2245-1	SC-MH-2245	JB-2245-1	1-2	STU-DTL-001	SC CONDUIT
SC-2245-2	SC-MH-2245	SF-2245-1	1-2	STU-DTL-001	SC CONDUIT
SC-2245-3	SC-MH-2245-1	JB-2245-2	1-2	STU-DTL-001	SC CONDUIT
SC-2245-4	SC-MH-2245	SF-2245-2	1-2	STU-DTL-001	SC CONDUIT
SC-2245-5	SC-MH-2245-1	PF-2245	1-4	STU-DTL-001	SC CONDUIT
SC-2245-6	SC-MH-2245	JB-2245-3	1-4	STU-DTL-001	SC CONDUIT
SC-2245-7	SC-MH-2245	JB-2245-4	1-4	STU-DTL-001	SC CONDUIT
SC-2245-8	JB-2245-3	CSU-2246-3	1-2	STU-DTL-001	SC CONDUIT
SC-2245-9	JB-2245-4	CSU-2246-4	1-2	STU-DTL-001	SC CONDUIT
SC-2245-11	SC-MH-2245	FDN-2244	4-2	STU-DTL-001	SC CONDUIT
SC-2245-12	SC-MH-2245	JB-2245-5	1-2	STU-DTL-001	SC CONDUIT
SC-2245-13	SC-MH-2245-1	JB-2245-6	1-2	STU-DTL-001	SC CONDUIT
SC-2245-14	SC-MH-2245-1	JB-2245-7	1-2	STU-DTL-001	SC CONDUIT
SC-2245-15	SC-MH-2245-1	JB-2245-8	1-2	STU-DTL-001	SC CONDUIT
SC-2245-16	SC-MH-2245	JB-2245-9	1-2	STU-DTL-001	SC CONDUIT
SC-2245-17	SC-MH-2245-1	JB-2245-10	1-2	STU-DTL-001	SC CONDUIT
SC-2245-18	SC-MH-2245	CSU-2246-1	1-2	STU-DTL-001	SC CONDUIT
SC-2245-19	SC-MH-2245	CSU-2246-2	1-2	STU-DTL-001	SC CONDUIT
SC-2245-21	SC-MH-2245	BID-2245-1	1-2	STU-DTL-001	SC CONDUIT
SC-2245-22	SC-MH-2245-1	BID-2245-2	1-2	STU-DTL-001	SC CONDUIT
SC-2242-15	SC-HH-2243	SC-HH-2242-1	1-4	STU-DTL-001	SC CONDUIT
SC-2242-16	SC-HH-2242-1	SC-HH-2242-2	1-4	STU-DTL-001	SC CONDUIT

BID ALTERNATE 14

NO.	DATE	BY	CHECK/DESIGN	REVISION / SUBMITTAL

AECOM

90% SUBMISSION - 01/22/16



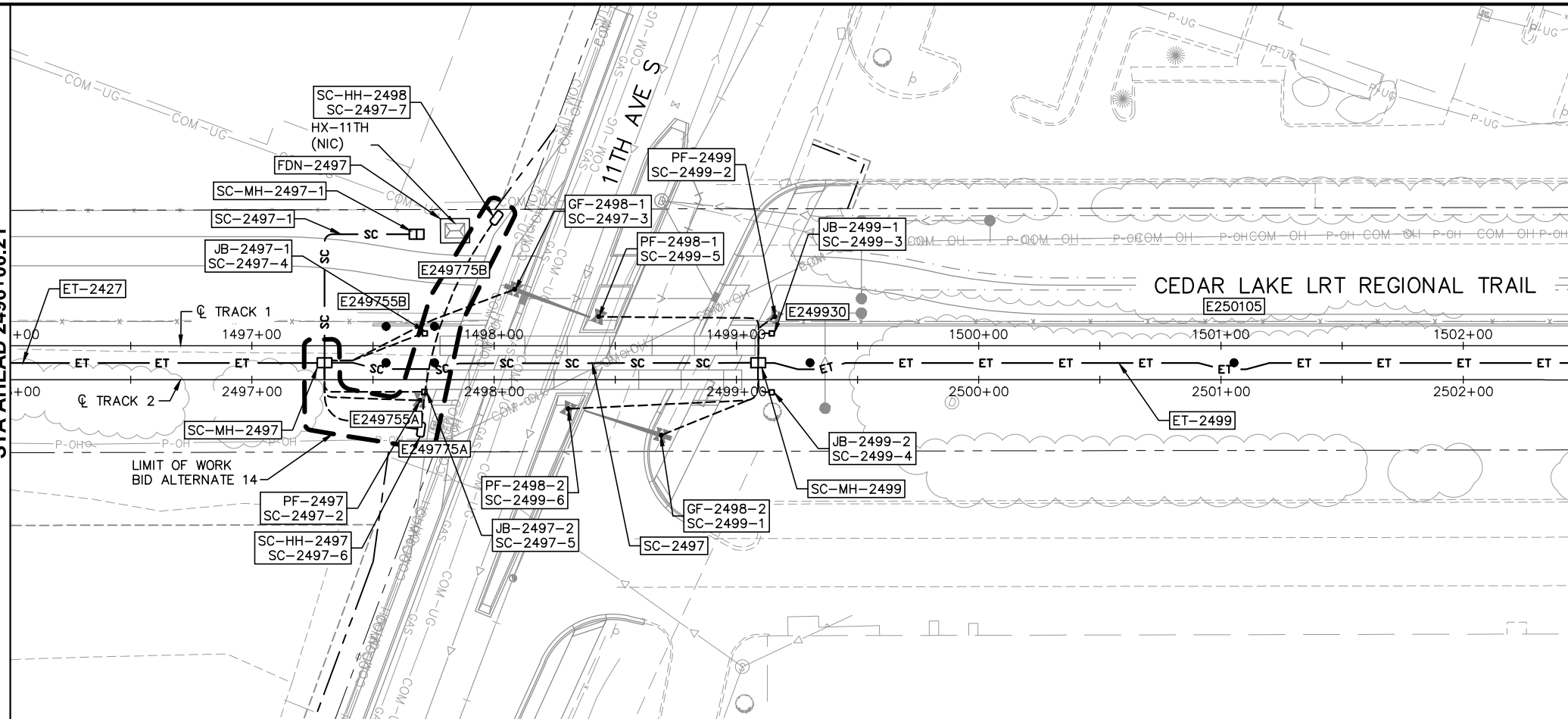

CIVIL (BA14)
SYSTEMWIDE ELECTRICAL SCHEDULE
STA 2240+50 TO STA 2247+50

DISCIPLINE: **SYSTEMS** SHEET NAME: **W2-SYS-SWE-SCH-006-LRCI-027**

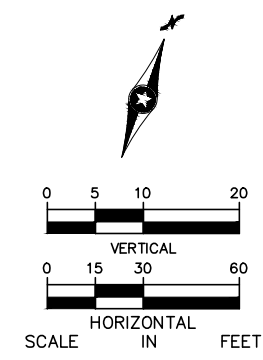
SHEET
10
OF
33

Jan, 18 2016 10:58 am V:\3400_ADC\CAD\LRCI\027\PLAN SHEETS\E1-SYS-SWE-PRF-LRCI-027.dwg By: V-TranTT

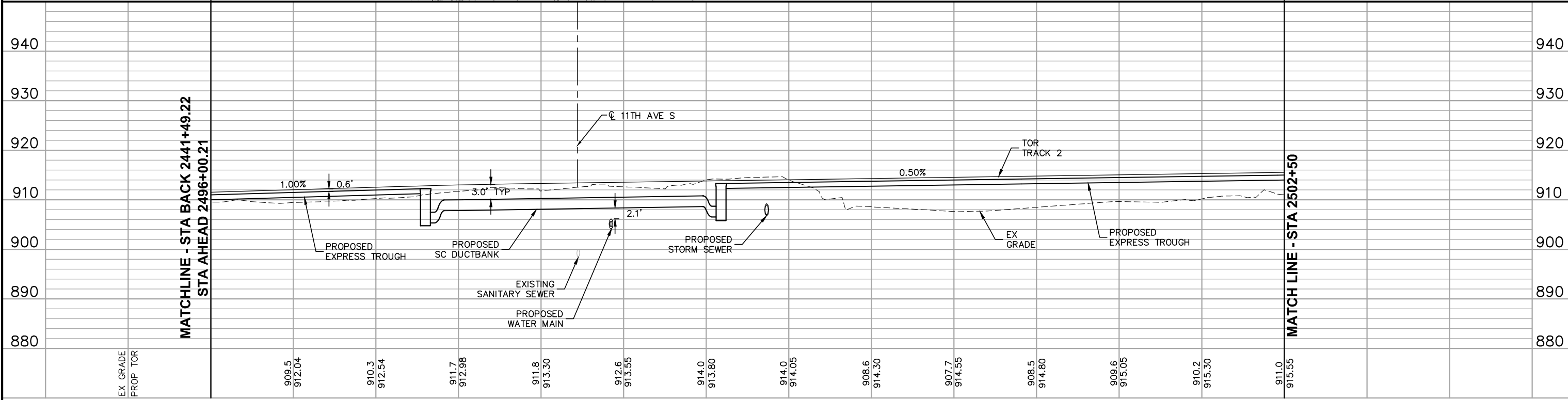
MATCHLINE - STA BACK 2441+49.22
STA AHEAD 2496+00.21



MATCH LINE - STA 2502+50



MATCHLINE - STA BACK 2441+49.22
STA AHEAD 2496+00.21



MATCH LINE - STA 2502+50

EX GRADE	909.5 912.04	910.3 912.54	911.7 912.98	911.8 913.30	912.6 913.55	914.0 913.80	914.0 914.05	908.6 914.30	907.7 914.55	908.5 914.80	909.6 915.05	910.2 915.30	911.0 915.55
PROP TOR	2496+00	2497+00	2498+00	2499+00	2500+00	2501+00	2502+00	2502+50					

NO.	DATE	BY	CHECK/DESIGN	REVISION / SUBMITTAL

AECOM

90% SUBMISSION - 01/22/16

METROPOLITAN COUNCIL

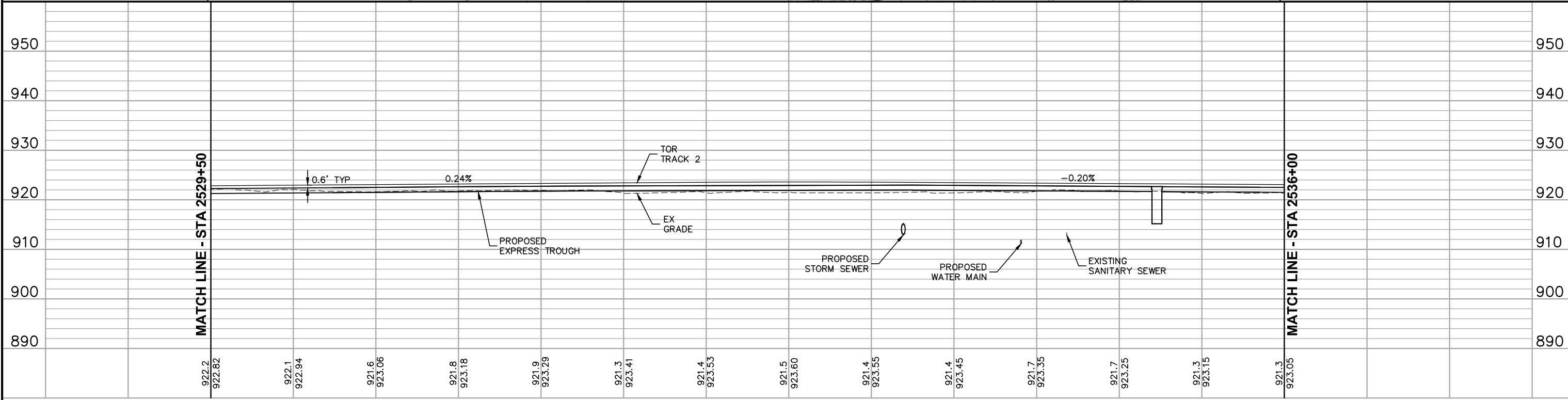
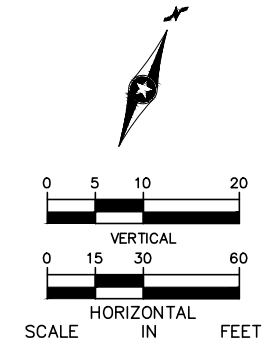
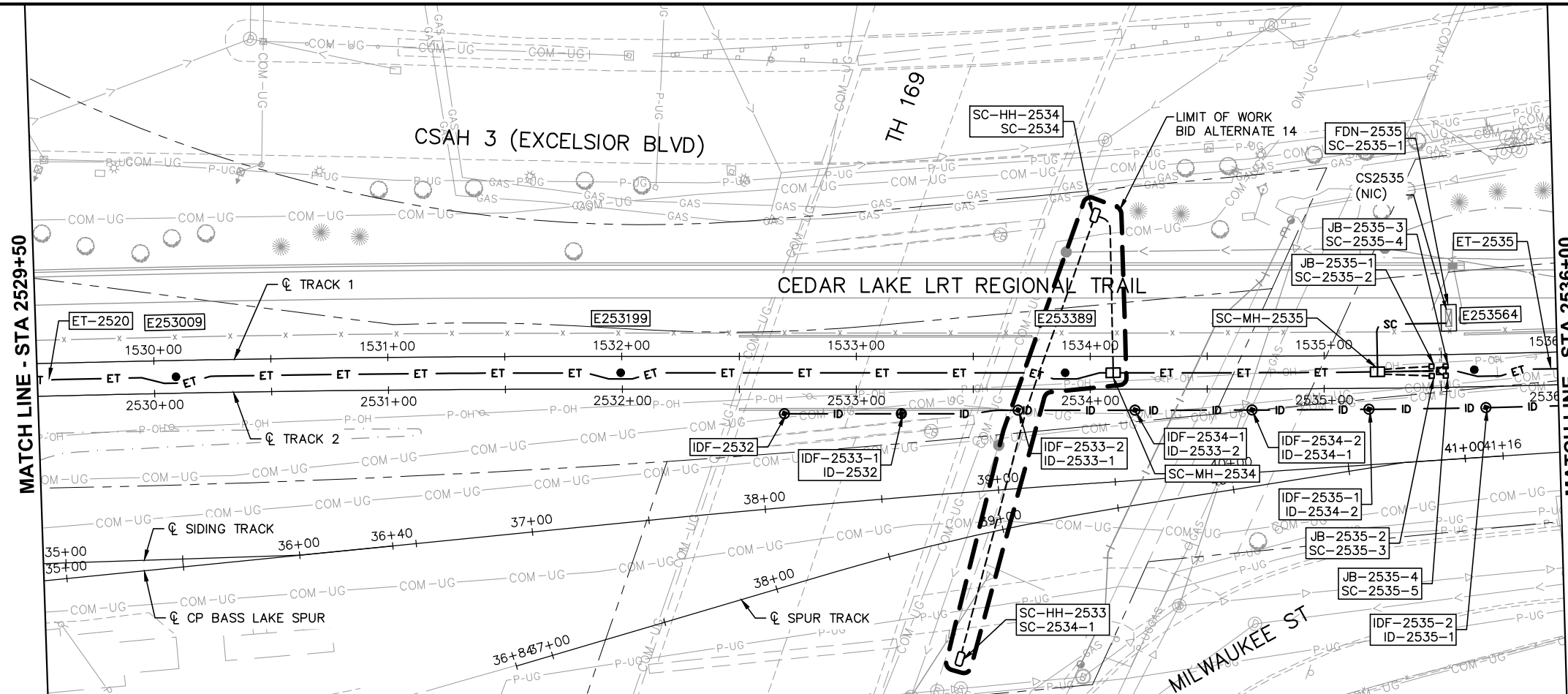
SOUTHWEST
Green Line LRT Extension

CIVIL (BA14)
SYSTEMWIDE ELECTRICAL
PLAN AND PROFILE
STA 2496+00.21 TO STA 2502+50

DISCIPLINE: **SYSTEMS** SHEET NAME: **E1-SYS-SWE-PRF-001-LRCI-027**

SHEET **13** OF **33**

Jan, 18 2016 11:02 am V:\3400_ADC\CAD\LRCI\027\PLAN SHEETS\E1-SYS-SWE-PRF-LRCI-027.dwg By: V-TranTT



2529+50 2530+00 2531+00 2532+00 2533+00 2534+00 2535+00 2536+00

NO.	DATE	BY	CHECK/DESIGN	REVISION / SUBMITTAL

AECOM

90% SUBMISSION - 01/22/16

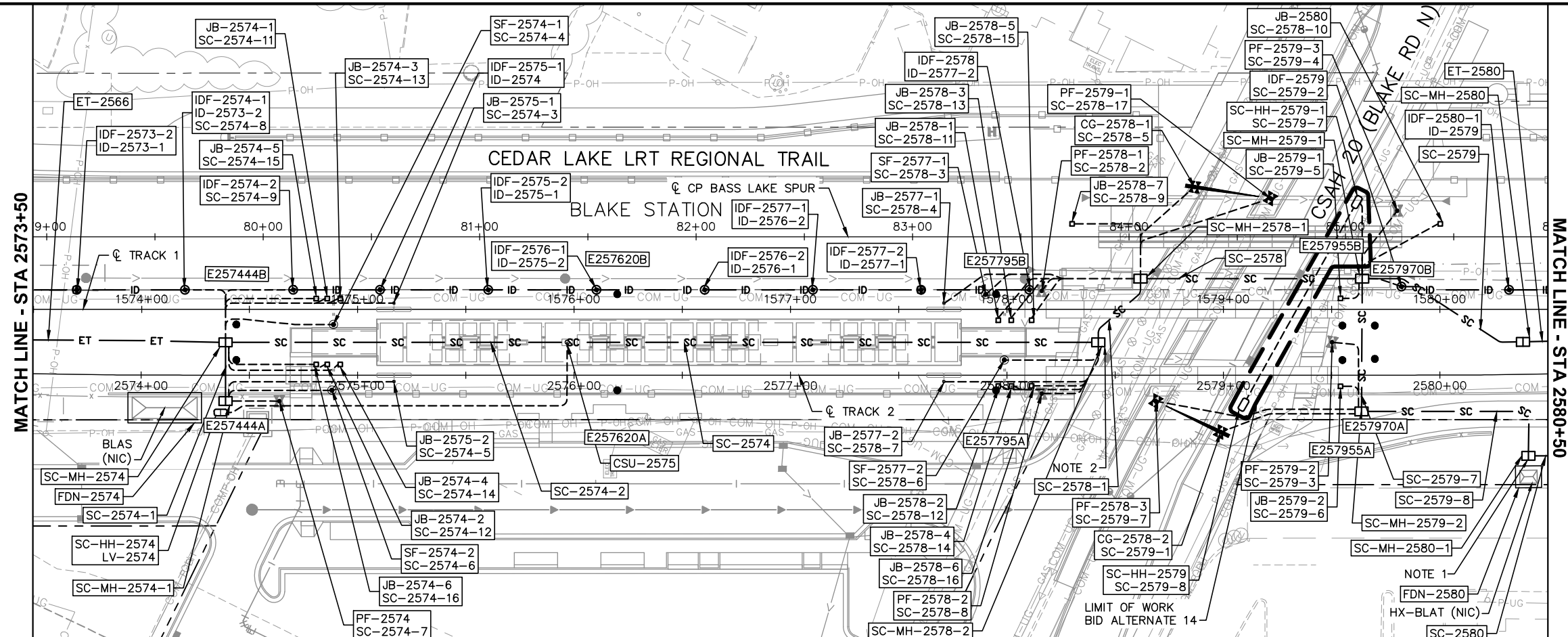



CIVIL (BA14)
SYSTEMWIDE ELECTRICAL
PLAN AND PROFILE
STA 2529+50 TO STA 2536+00

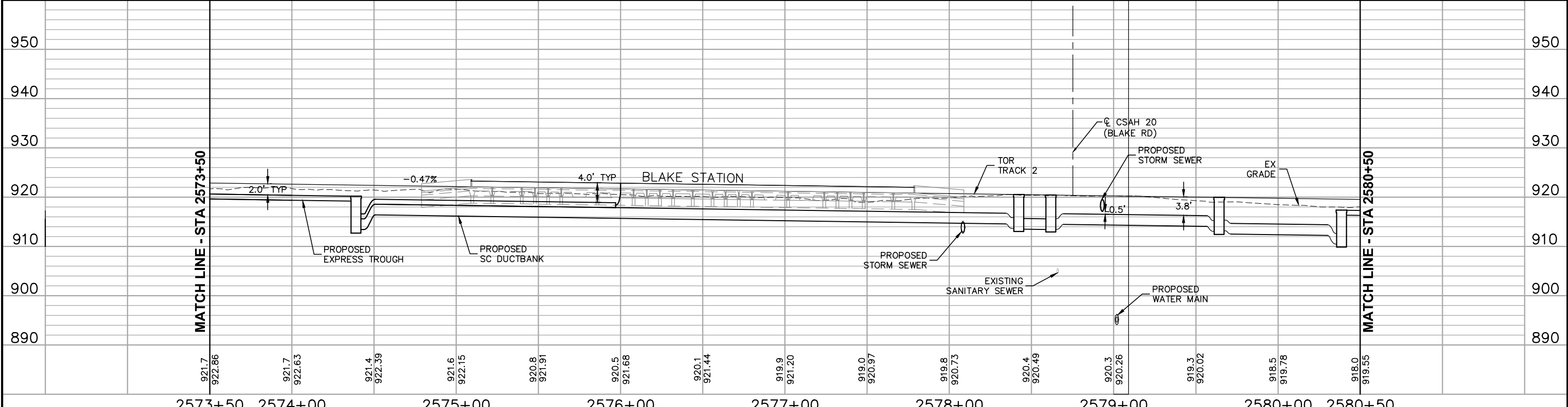
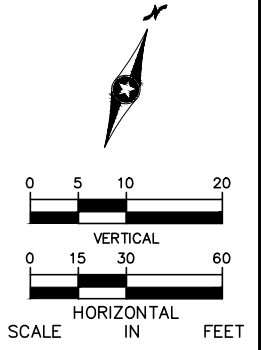
DISCIPLINE: **SYSTEMS** SHEET NAME: **E1-SYS-SWE-PRF-006-LRCI-027**

SHEET **15**
OF
33

Jan, 18 2016 11:13 am V:\3400_ADC\CAD\LRCI\LRCI-027\PLAN SHEETS\E1-SYS-SWE-PRF-LRCI-027.dwg By: V-Tran TT



- NOTES:
- SEE VOLUME 10A TRAFFIC FOR TRAFFIC CONDUIT.
 - SEE VOLUME 10B LIGHTING SHEET W2-BLK-ELE-PLN-101 FOR CONDUIT ROUTING TO PARK AND RIDE/BUS OPERATOR FACILITY COMMUNICATIONS CABINET.



NO.	DATE	BY	CHECK/DESIGN	REVISION / SUBMITTAL

AECOM

90% SUBMISSION - 01/22/16

METROPOLITAN COUNCIL
SOUTHWEST
 Green Line LRT Extension

CIVIL (BA14)
SYSTEMWIDE ELECTRICAL
PLAN AND PROFILE
STA 2573+50 TO STA 2580+50

DISCIPLINE: **SYSTEMS**
 SHEET NAME: **E1-SYS-SWE-PRF-013-LRCI-027**

SHEET
 17
 OF
 33

Jan. 18 2016 11:08 am V:\3400_ADC\CAD\LRCI\027\PLAN SHEETS\E1-SYS-SWE-SCH-013-LRCI-027.dwg By: V-TranTT

SYSTEMS DEVICE SCHEDULE				
DEVICE ID	TRACK 2 CL STATIONING	TRACK 2 CL OFFSET	DEVICE DETAIL# / REFERENCE DRAWING	SPECIAL NOTES
SC-MH-2574	2574+39	15.2' L	SWE-DTL-003	SC MANHOLE
SC-MH-2574-1	2574+39	11.9' R	SWE-DTL-003	SC MANHOLE
SC-MH-2578-1	2578+62	44.5' L	SWE-DTL-003	SC MANHOLE
SC-MH-2578-2	2578+42	15.2' L	SWE-DTL-003, NOTE 2	SC MANHOLE
SC-MH-2579-1	2579+64	44.5' L	SWE-DTL-003	SC MANHOLE
SC-MH-2579-2	2579+64	16.8' R	SWE-DTL-003	SC MANHOLE
SC-MH-2580	2580+39	15.1' L	SWE-DTL-003	SC MANHOLE
SC-MH-2580-1	2580+40	37.6' R	SWE-DTL-003, NOTE 1	SC MANHOLE
SC-HH-2574	2574+37	17.3' R	SWE-DTL-005	SC HANDHOLE
FDN-2574	2574+11	15.1' R	SWE-DTL-SIG-015	SC HOUSE FOUNDATION
FDN-2580	2580+40	47.2' R	SWE-DTL-SIG-015	SC HOUSE FOUNDATION
SF-2574-1	2574+89	23.4' L	SWE-DTL-SIG-005	SIGNAL FOUNDATION AND STUB UP
SF-2574-2	2574+88	7.0' R	SWE-DTL-SIG-005	SIGNAL FOUNDATION AND STUB UP
SF-2577-1	2577+90	37.2' L	SWE-DTL-SIG-005	SIGNAL FOUNDATION AND STUB UP
SF-2577-2	2577+99	7.0' L	SWE-DTL-SIG-005	SIGNAL FOUNDATION AND STUB UP
CG-2578-1	2578+87	86.9' L	SWE-DTL-010	FREIGHT CROSSING GATE
CG-2578-2	2578+99	26.3' R	SWE-DTL-010	FREIGHT CROSSING GATE
PF-2574	2574+64	12.0' R	SWE-DTL-SIG-006	LRT FLASHER FOUNDATION AND STUB UP
PF-2578-1	2578+16	38.9' L	SWE-DTL-SIG-006	LRT FLASHER FOUNDATION AND STUB UP
PF-2578-2	2578+16	8.5' R	SWE-DTL-SIG-006	LRT FLASHER FOUNDATION AND STUB UP
PF-2578-3	2578+69	12.0' R	SWE-DTL-SIG-011	FREIGHT FLASHER
PF-2579-1	2579+22	81.6' L	SWE-DTL-SIG-011	FREIGHT FLASHER
PF-2579-2	2579+50	15.2' L	SWE-DTL-SIG-006	LRT FLASHER FOUNDATION AND STUB UP
PF-2579-3	2579+80	75.9' L	SWE-DTL-SIG-006	LRT FLASHER FOUNDATION AND STUB UP
JB-2574-1	2574+86	35.4' L	1/SWE-DTL-SIG-024	TRACK CIRCUIT LEADS JUNCTION BOX
JB-2574-2	2574+86	5.0' L	1/SWE-DTL-SIG-024	TRACK CIRCUIT LEADS JUNCTION BOX
JB-2574-3	2574+92	35.4' L	SWE-DTL-SIG-018	DOUBLE IMPEDANCE BOND JUNCTION BOX
JB-2574-4	2574+92	5.0' L	SWE-DTL-SIG-018	DOUBLE IMPEDANCE BOND JUNCTION BOX
JB-2574-5	2574+81	35.4' L	1/SWE-DTL-SIG-007	WHEEL SENSOR JUNCTION BOX
JB-2574-6	2574+81	5.0' L	1/SWE-DTL-SIG-007	WHEEL SENSOR JUNCTION BOX
JB-2575-1	2575+17	33.3' L	SWE-DTL-SIG-004	TWC ANTENNA JUNCTION BOX
JB-2575-2	2575+17	2.9' R	SWE-DTL-SIG-004	TWC ANTENNA JUNCTION BOX
JB-2577-1	2577+71	33.3' L	SWE-DTL-SIG-004	TWC ANTENNA JUNCTION BOX
JB-2577-2	2577+71	2.9' R	SWE-DTL-SIG-004	TWC ANTENNA JUNCTION BOX
JB-2578-1	2577+96	25.4' L	SWE-DTL-SIG-018	DOUBLE IMPEDANCE BOND JUNCTION BOX
JB-2578-2	2577+96	5.0' R	SWE-DTL-SIG-018	DOUBLE IMPEDANCE BOND JUNCTION BOX
JB-2578-3	2578+02	25.4' L	1/SWE-DTL-SIG-024	TRACK CIRCUIT LEADS JUNCTION BOX
JB-2578-4	2578+02	5.0' R	1/SWE-DTL-SIG-024	TRACK CIRCUIT LEADS JUNCTION BOX
JB-2578-5	2578+11	25.4' L	1/SWE-DTL-SIG-007	WHEEL SENSOR JUNCTION BOX
JB-2578-6	2578+11	5.0' R	1/SWE-DTL-SIG-007	WHEEL SENSOR JUNCTION BOX
JB-2578-7	2578+30	69.9' L	1/SWE-DTL-SIG-024	FREIGHT TRACK CIRCUIT LEADS JUNCTION BOX
JB-2579-1	2579+54	35.5' L	1/SWE-DTL-SIG-024	GRADE CROSSING JUNCTION BOX
JB-2579-2	2579+54	5.1' R	1/SWE-DTL-SIG-024	GRADE CROSSING JUNCTION BOX
JB-2580	2580+00	69.9' L	1/SWE-DTL-SIG-024	FREIGHT TRACK CIRCUIT LEADS JUNCTION BOX
CSU-2575	2575+97	15.2' L	3/SWE-DTL-012	COMMUNICATION CABINET CONDUIT STUB UP
IDF-2573-2	2573+70	39.1' L	SWE-DTL-SIG-025 & 026	FREIGHT INTRUSION DETECTION FOUNDATION AND JUNCTION BOX
IDF-2574-1	2574+20	39.4' L	SWE-DTL-SIG-025 & 026	FREIGHT INTRUSION DETECTION FOUNDATION AND JUNCTION BOX
IDF-2574-2	2574+70	39.4' L	SWE-DTL-SIG-025 & 026	FREIGHT INTRUSION DETECTION FOUNDATION AND JUNCTION BOX
IDF-2575-1	2575+10	39.4' L	SWE-DTL-SIG-025 & 026	FREIGHT INTRUSION DETECTION FOUNDATION AND JUNCTION BOX
IDF-2575-2	2575+60	39.4' L	SWE-DTL-SIG-025 & 026	FREIGHT INTRUSION DETECTION FOUNDATION AND JUNCTION BOX
IDF-2576-1	2576+10	39.4' L	SWE-DTL-SIG-025 & 026	FREIGHT INTRUSION DETECTION FOUNDATION AND JUNCTION BOX
IDF-2576-2	2576+60	39.4' L	SWE-DTL-SIG-025 & 026	FREIGHT INTRUSION DETECTION FOUNDATION AND JUNCTION BOX
IDF-2577-1	2577+10	39.4' L	SWE-DTL-SIG-025 & 026	FREIGHT INTRUSION DETECTION FOUNDATION AND JUNCTION BOX
IDF-2577-2	2577+60	39.4' L	SWE-DTL-SIG-025 & 026	FREIGHT INTRUSION DETECTION FOUNDATION AND JUNCTION BOX
IDF-2578	2578+10	39.4' L	SWE-DTL-SIG-025 & 026	FREIGHT INTRUSION DETECTION FOUNDATION AND JUNCTION BOX
IDF-2579	2579+82	40.9' L	SWE-DTL-SIG-025 & 026	FREIGHT INTRUSION DETECTION FOUNDATION AND JUNCTION BOX
IDF-2580-1	2580+33	39.2' L	SWE-DTL-SIG-025 & 026	FREIGHT INTRUSION DETECTION FOUNDATION AND JUNCTION BOX
SC-HH-2579	2579+60	15.0' R	SWE-DTL-005	SC HANDHOLE
SC-HH-2579-1	2579+63	86.0' L	SWE-DTL-005	SC HANDHOLE

DUCTBANKS/ EXPRESS TROUGH/ CONDUITS					
DUCTBANK, EXPRESS TROUGH OR CONDUIT ID	FROM	TO	CONDUIT QTY-SIZE	DUCTBANK DETAIL # / REFERENCE DRAWING	NOTES
ET-2566	SC-HH-2566	SC-MH-2574	TYPE I	1/SWE-DTL-010	EXPRESS TROUGH
ET-2580	SC-MH-2580	SC-MH-2595	TYPE I	1/SWE-DTL-010	EXPRESS TROUGH
SC-2574	SC-MH-2574	SC-MH-2579-1	12-4	12/STU-DTL-001	MAINLINE SC DUCTBANK
SC-2574-1	SC-MH-2574	SC-MH-2574-1	16-4	16/STU-DTL-001	SC DUCTBANK
SC-2574-2	SC-MH-2474	CSU-2575	4-4	4/STU-DTL-001	SC DUCTBANK
SC-2578	SC-MH-2578-1	SC-MH-2579-1	9-4	9/STU-DTL-001	SC DUCTBANK
SC-2578-1	SC-MH-2578-1	SC-MH-2578-2	9-4	9/STU-DTL-001	SC DUCTBANK
SC-2579	SC-MH-2579-1	SC-MH-2580	9-4	9/STU-DTL-001	SC DUCTBANK
SC-2579-7	SC-MH-2579-1	SC-MH-2579-2	12-4	12/STU-DTL-001	SC DUCTBANK
SC-2579-8	SC-MH-2579-2	SC-MH-2580-1	16-4	16/STU-DTL-001	SC DUCTBANK
SC-2580	SC-MH-2580-1	SC-MH-2580-2	6-4	6/STU-DTL-001	SC DUCTBANK
SC-2574-3	SC-MH-2574	JB-2575-1	1-2	STU-DTL-001	SC CONDUIT
SC-2574-4	SC-MH-2574	SF-2574-1	1-2	STU-DTL-001	SC CONDUIT
SC-2574-5	SC-MH-2574-1	JB-2575-2	1-2	STU-DTL-001	SC CONDUIT
SC-2574-6	SC-MH-2574-1	SF-2574-2	1-2	STU-DTL-001	SC CONDUIT
SC-2574-7	SC-MH-2574-1	PF-2574	1-4	STU-DTL-001	SC CONDUIT
SC-2574-8	SC-MH-2574	IDF-2574-1	1-2	STU-DTL-001	SC CONDUIT
SC-2574-9	SC-MH-2574	IDF-2574-2	1-2	STU-DTL-001	SC CONDUIT
SC-2574-11	SC-MH-2574	JB-2574-1	1-2	STU-DTL-001	SC CONDUIT
SC-2574-12	SC-MH-2574	JB-2574-2	1-2	STU-DTL-001	SC CONDUIT
SC-2574-13	SC-MH-2574	JB-2574-3	1-2	STU-DTL-001	SC CONDUIT
SC-2574-14	SC-MH-2574	JB-2574-4	1-2	STU-DTL-001	SC CONDUIT
SC-2574-15	SC-MH-2574	JB-2574-5	1-2	STU-DTL-001	SC CONDUIT
SC-2574-16	SC-MH-2574	JB-2574-6	1-2	STU-DTL-001	SC CONDUIT
SC-2578-2	SC-MH-2578-1	PF-2578-1	1-4	STU-DTL-001	SC CONDUIT
SC-2578-3	SC-MH-2578-1	SF-2577-1	1-2	STU-DTL-001	SC CONDUIT
SC-2578-4	SC-MH-2578-1	JB-2577-1	1-2	STU-DTL-001	SC CONDUIT
SC-2578-5	SC-MH-2578-1	CG-2578-1	2-4	STU-DTL-001	SC CONDUIT
SC-2578-6	SC-MH-2578-2	SF-2577-2	1-2	STU-DTL-001	SC CONDUIT
SC-2578-7	SC-MH-2578-2	JB-2577-2	1-2	STU-DTL-001	SC CONDUIT
SC-2578-8	SC-MH-2578-2	PF-2578-2	1-4	STU-DTL-001	SC CONDUIT
SC-2578-9	SC-MH-2578-1	JB-2578-7	1-2	STU-DTL-001	SC CONDUIT
SC-2578-10	SC-MH-2578-1	JB-2580	1-2	STU-DTL-001	SC CONDUIT
SC-2578-11	SC-MH-2578-1	JB-2578-1	1-2	STU-DTL-001	SC CONDUIT
SC-2578-12	SC-MH-2578-2	JB-2578-2	1-2	STU-DTL-001	SC CONDUIT
SC-2578-13	SC-MH-2578-1	JB-2578-3	1-2	STU-DTL-001	SC CONDUIT
SC-2578-14	SC-MH-2578-2	JB-2578-4	1-2	STU-DTL-001	SC CONDUIT
SC-2578-15	SC-MH-2578-1	JB-2578-5	1-2	STU-DTL-001	SC CONDUIT
SC-2578-16	SC-MH-2578-2	JB-2578-6	1-2	STU-DTL-001	SC CONDUIT
SC-2578-17	SC-MH-2578-1	PF-2579-1	2-4	STU-DTL-001	SC CONDUIT
SC-2579-1	SC-MH-2579-2	CG-2578-2	2-4	STU-DTL-001	SC CONDUIT
SC-2579-2	SC-MH-2579-1	IDF-2579	1-2	STU-DTL-001	SC CONDUIT
SC-2579-3	SC-MH-2579-1	PF-2579-2	1-4	STU-DTL-001	SC CONDUIT
SC-2579-4	SC-MH-2579-1	PF-2579-3	1-4	STU-DTL-001	SC CONDUIT
SC-2579-5	SC-MH-2579-1	JB-2579-1	1-2	STU-DTL-001	SC CONDUIT
SC-2579-6	SC-MH-2579-2	JB-2579-2	1-2	STU-DTL-001	SC CONDUIT
SC-2579-7	SC-MH-2579-2	PF-2578-3	2-4	STU-DTL-001	SC CONDUIT
ID-2573-1	IDF-2573-1	IDF-2573-2	1-2	STU-DTL-001	ID CONDUIT
ID-2573-2	IDF-2573-2	IDF-2574-1	1-2	STU-DTL-001	ID CONDUIT
ID-2574	IDF-2574-2	IDF-2575-1	1-2	STU-DTL-001	ID CONDUIT
ID-2575-1	IDF-2575-1	IDF-2575-2	1-2	STU-DTL-001	ID CONDUIT
ID-2575-2	IDF-2575-2	IDF-2576-1	1-2	STU-DTL-001	ID CONDUIT
ID-2576-1	IDF-2576-1	IDF-2576-2	1-2	STU-DTL-001	ID CONDUIT
ID-2576-2	IDF-2576-2	IDF-2577-1	1-2	STU-DTL-001	ID CONDUIT
ID-2577-1	IDF-2577-1	IDF-2577-2	1-2	STU-DTL-001	ID CONDUIT
ID-2577-2	IDF-2577-2	IDF-2578	1-2	STU-DTL-001	ID CONDUIT
ID-2579	IDF-2579	IDF-2580-1	1-2	STU-DTL-001	ID CONDUIT
LV-2574	SC-HH-2574	CSU-2575	1-2	STU-DTL-001	LV CONDUIT
SC-2579-7	SC-MH-2579	SC-HH-2579	1-4	STU-DTL-001	SC CONDUIT
SC-2579-8	SC-HH-2579	SC-HH-2579-1	1-4	STU-DTL-001	SC CONDUIT

BID ALTERNATE 14

NO.	DATE	BY	CHECK	DESIGN	REVISION / SUBMITTAL

AECOM

90% SUBMISSION - 01/22/16

METROPOLITAN
C O U N C I L

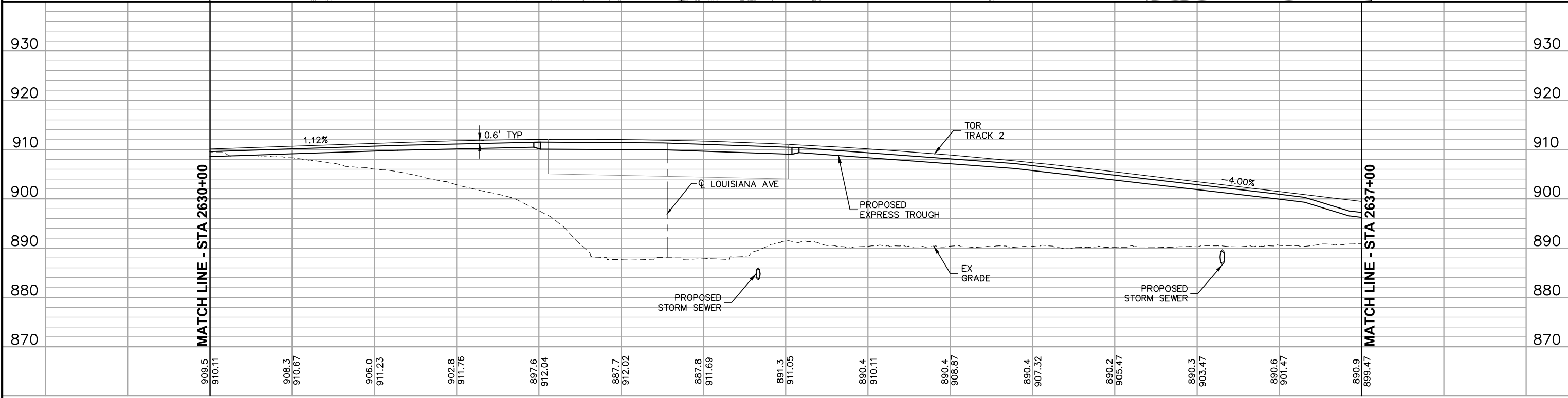
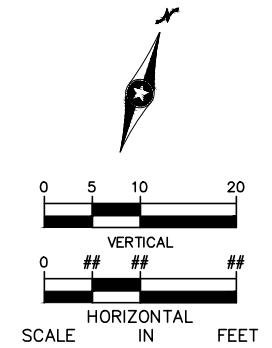
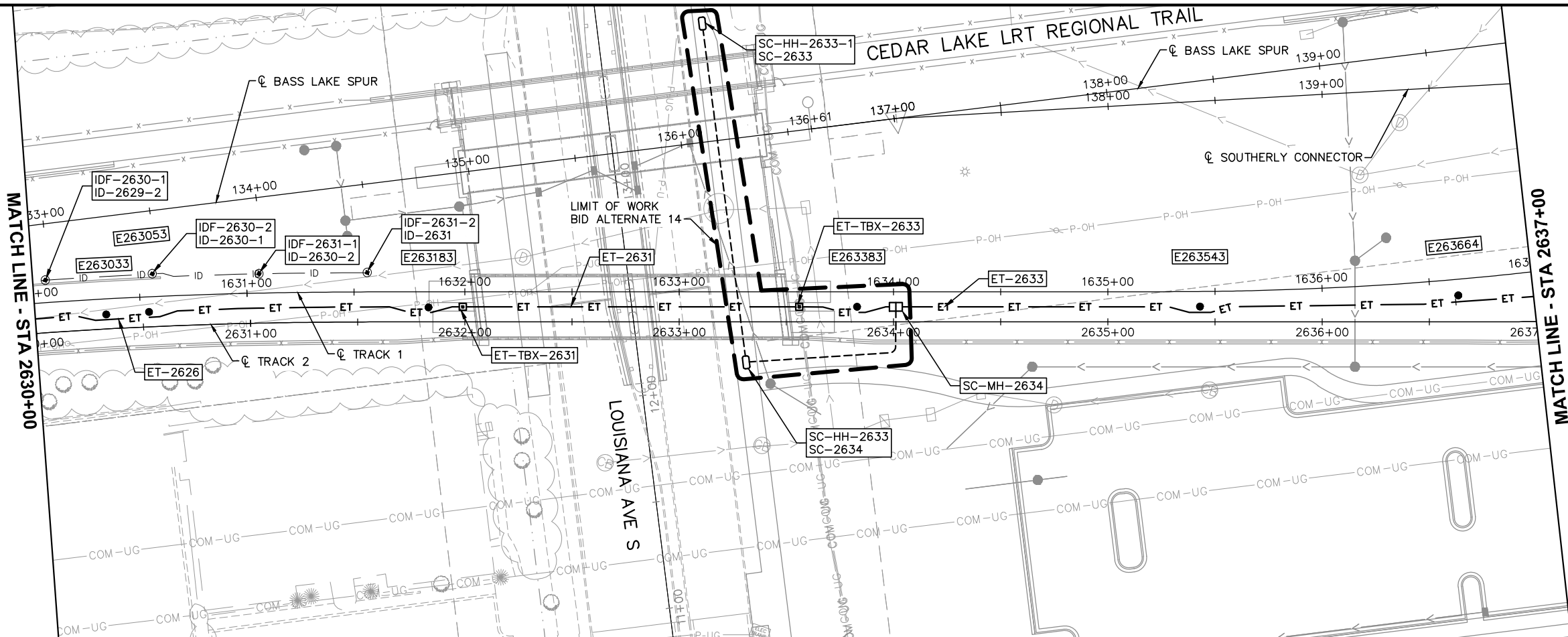
SOUTHWEST
Green Line LRT Extension

CIVIL (BA14)
SYSTEMWIDE ELECTRICAL
SCHEDULE
STA 2573+50 TO STA 2580+50

DISCIPLINE: **SYSTEMS** SHEET NAME: **E1-SYS-SWE-SCH-013-LRCI-027**

SHEET
18
OF
33

Jan, 18 2016 11:03 am V:\3400_ADC\CAD\LRCI\027\PLAN SHEETS\E2-SYS-SWE-PRF-LRCI-027.dwg By: V-TranTT



2630+00	2631+00	2632+00	2633+00	2634+00	2635+00	2636+00	2637+00
---------	---------	---------	---------	---------	---------	---------	---------

NO.	DATE	BY	CHECK/DESIGN	REVISION / SUBMITTAL

AECOM

90% SUBMISSION - 01/22/16

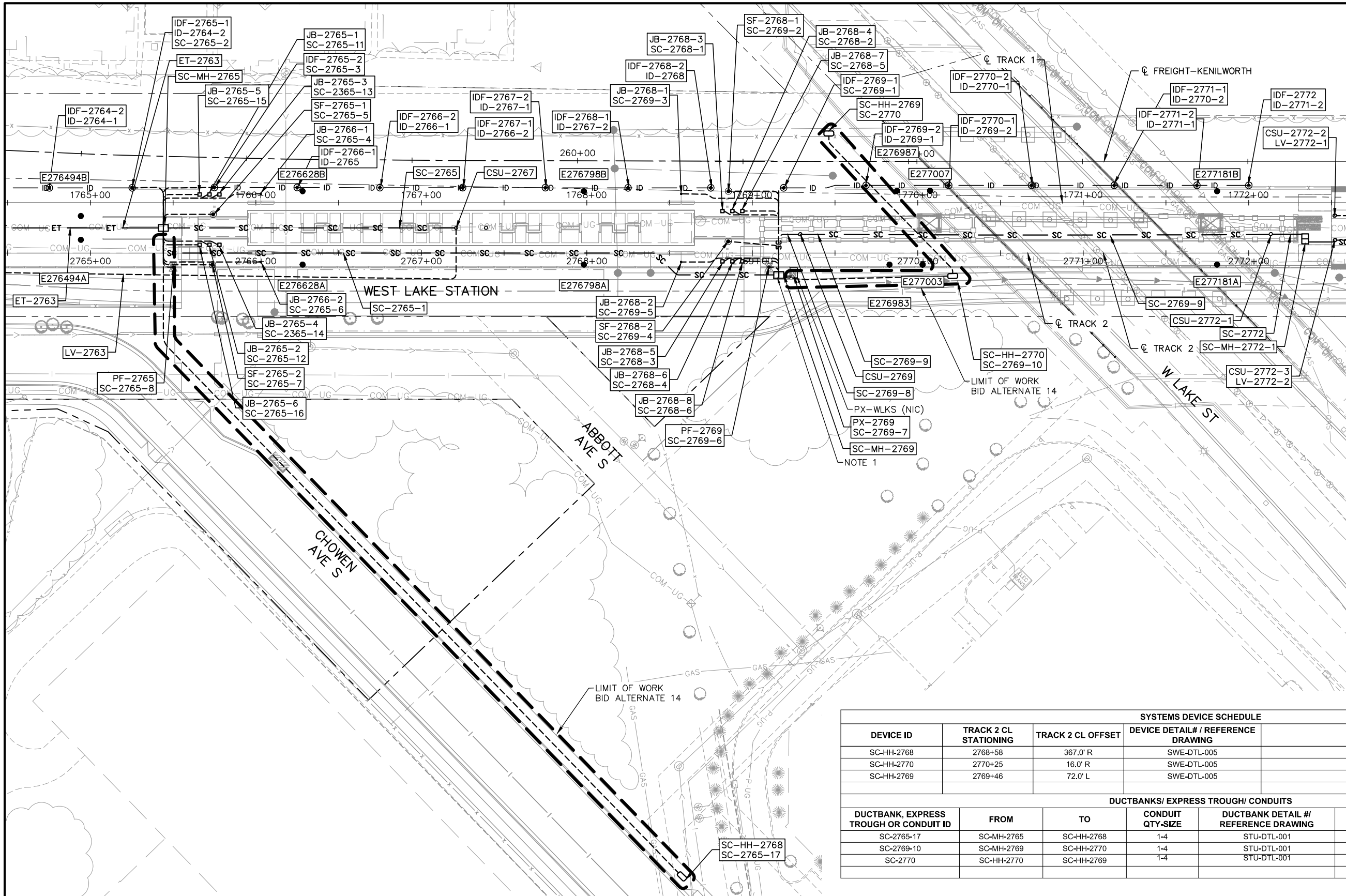



CIVIL (BA14)
SYSTEMWIDE ELECTRICAL
PLAN AND PROFILE
STA 2630+00 TO STA 2637+00

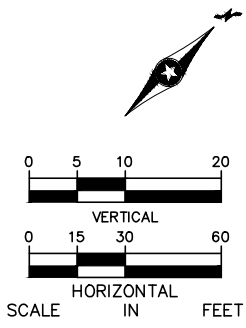
DISCIPLINE: **SYSTEMS** SHEET NAME: **E2-SYS-SWE-PRF-006-LRCI-027**

SHEET
19
OF
33

Jan, 18 2016 11:48 am V:\3400_ADC\CAD\LRCI\027\PLAN SHEETS\E3-SYS-SWE-PRF-LRCI-027.dwg By: V-TranTT



NOTES:
1. SEE VOLUME 11C, SHEET E3-WST-ELE-PLN-431 FOR CONDUIT ROUTING TO VERTICAL CIRCULATION CABINETS.



SYSTEMS DEVICE SCHEDULE					
DEVICE ID	TRACK 2 CL STATIONING	TRACK 2 CL OFFSET	DEVICE DETAIL# / REFERENCE DRAWING	SPECIAL NOTES	
SC-HH-2768	2768+58	367.0' R	SWE-DTL-005	SC HANDHOLE	
SC-HH-2770	2770+25	16.0' R	SWE-DTL-005	SC HANDHOLE	
SC-HH-2769	2769+46	72.0' L	SWE-DTL-005	SC HANDHOLE	

DUCTBANKS/ EXPRESS TROUGH/ CONDUITS					
DUCTBANK, EXPRESS TROUGH OR CONDUIT ID	FROM	TO	CONDUIT QTY-SIZE	DUCTBANK DETAIL # / REFERENCE DRAWING	NOTES
SC-2765-17	SC-MH-2765	SC-HH-2768	1-4	STU-DTL-001	SC CONDUIT
SC-2769-10	SC-MH-2769	SC-HH-2770	1-4	STU-DTL-001	SC CONDUIT
SC-2770	SC-HH-2770	SC-HH-2769	1-4	STU-DTL-001	SC CONDUIT

NO.	DATE	BY	CHECK DESIGN	REVISION / SUBMITTAL



90% SUBMISSION - 01/22/16

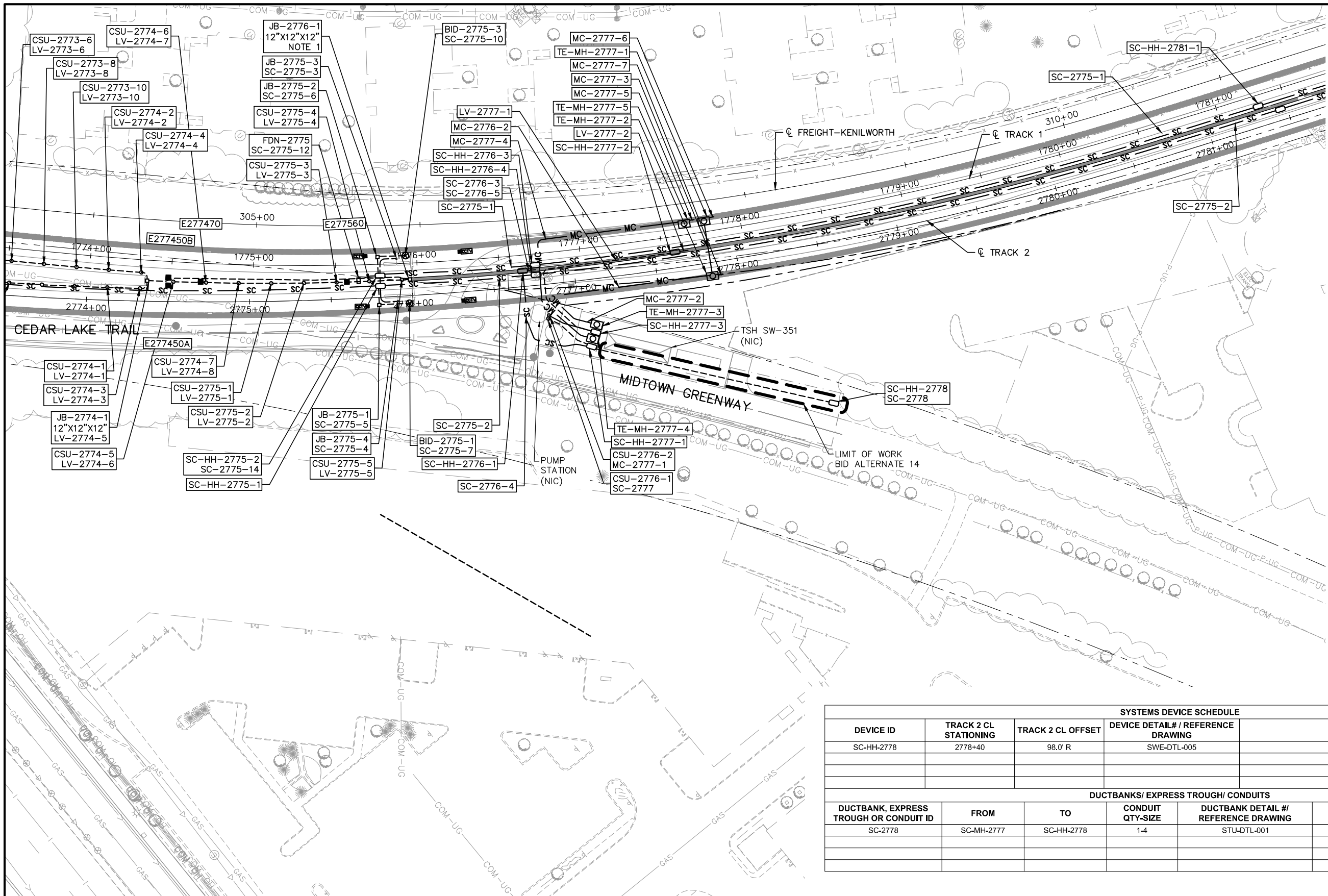


CIVIL (BA14)
SYSTEMWIDE ELECTRICAL
PLAN AND PROFILE
STA 2764+50 TO STA 2774+00

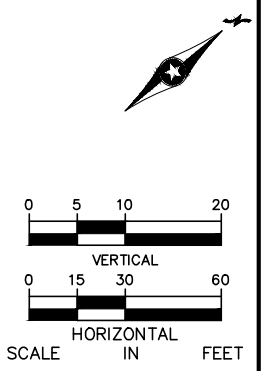
DISCIPLINE: **SYSTEMS** SHEET NAME: **E3-SYS-SWE-PRF-025-LRCI-027**

SHEET
23
OF
33

Jan, 18 2016 11:49 am V:\3400_ADC\CAD\LRCI\027\PLAN SHEETS\E3-SYS-SWE-PRF-LRCI-027.dwg By: V-TranTT

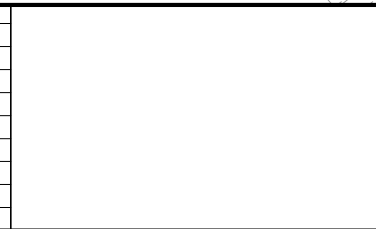


- NOTES:
- SEE VOLUME 5 TUNNELS FOR CONTINUATION OF CONDUITS.
 - SEE VOLUME 11C, SHEET E3-WST-ELE-PLN-433 FOR CONDUIT ROUTING TO VERTICAL CIRCULATION CABINETS.



SYSTEMS DEVICE SCHEDULE					
DEVICE ID	TRACK 2 CL STATIONING	TRACK 2 CL OFFSET	DEVICE DETAIL# / REFERENCE DRAWING	SPECIAL NOTES	
SC-HH-2778	2778+40	98.0' R	SWE-DTL-005	SC HANDHOLE	
DUCTBANKS/ EXPRESS TROUGH/ CONDUITS					
DUCTBANK, EXPRESS TROUGH OR CONDUIT ID	FROM	TO	CONDUIT QTY-SIZE	DUCTBANK DETAIL #/ REFERENCE DRAWING	NOTES
SC-2778	SC-MH-2777	SC-HH-2778	1-4	STU-DTL-001	SC CONDUIT

NO.	DATE	BY	CHECK	DESIGN	REVISION / SUBMITTAL



90% SUBMISSION - 01/22/16

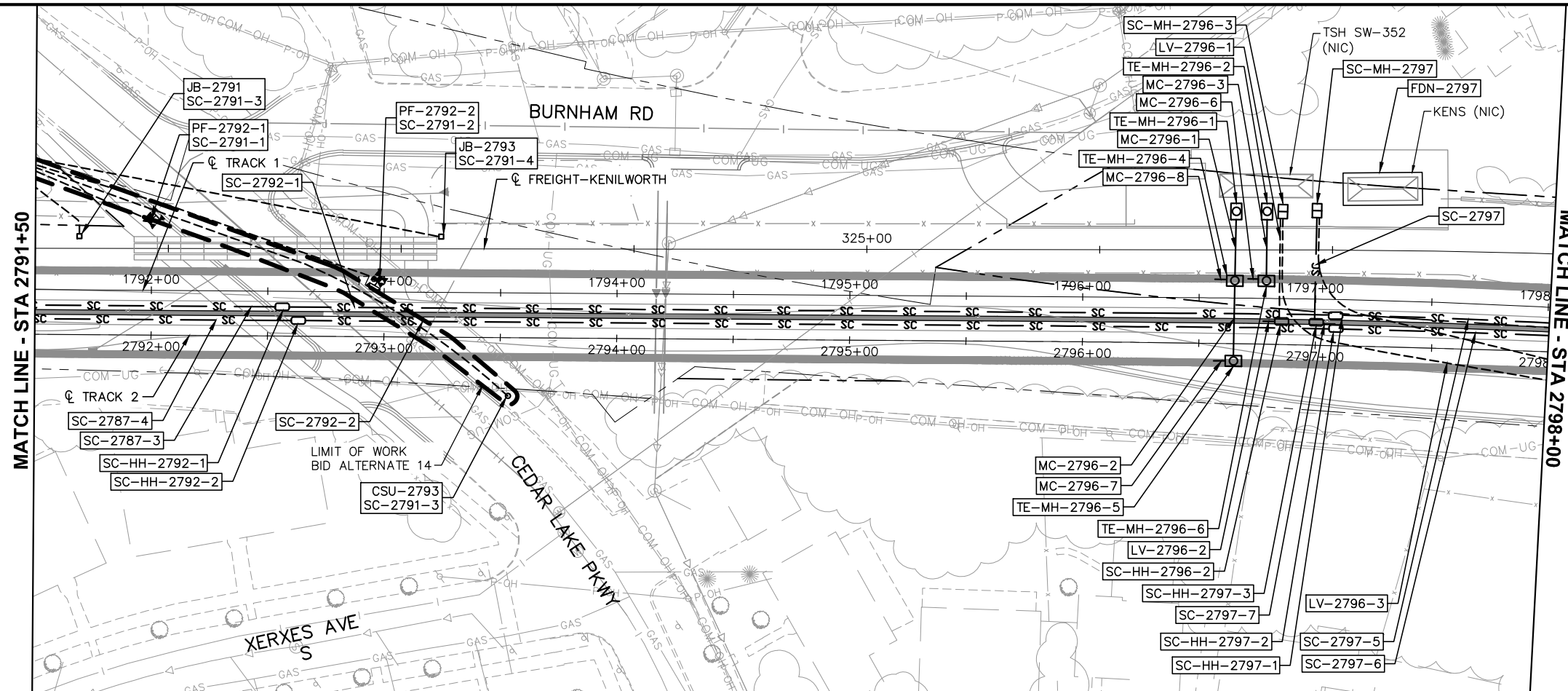


CIVIL (BA14)
SYSTEMWIDE ELECTRICAL
PLAN AND PROFILE
STA 2773+50 TO STA 2782+00

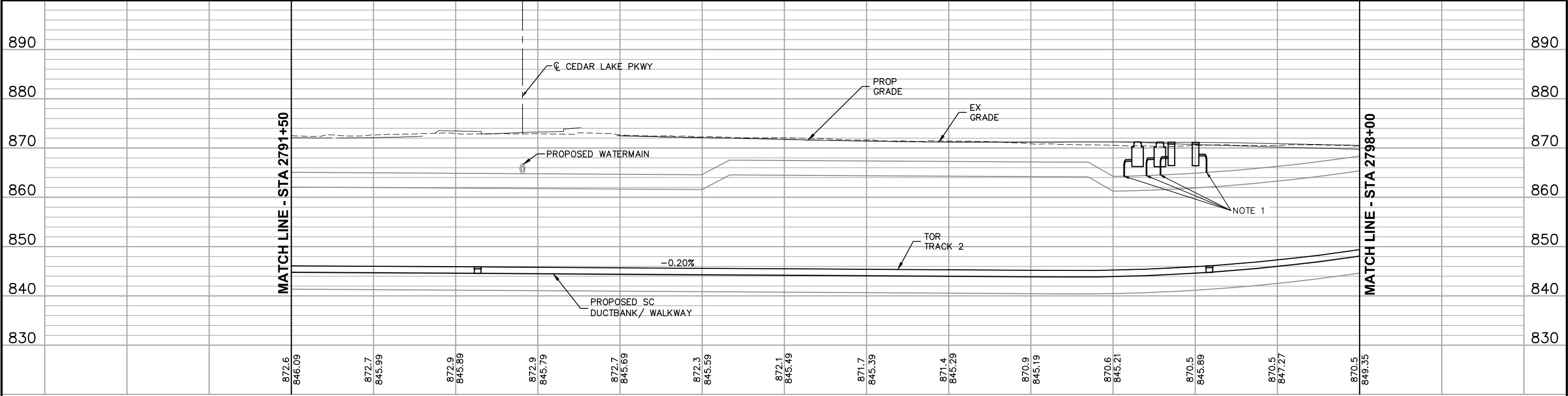
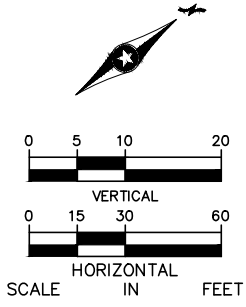
DISCIPLINE: **SYSTEMS** SHEET NAME: **E3-SYS-SWE-PRF-026-LRCI-027**

SHEET
 24
 OF
 33

Jan, 18 2016 11:52 am V:\3400_ADC\CAD\LRCI\027\PLAN SHEETS\E3-SYS-SWE-PRF-LRCI-027.dwg By: V-TranTT



NOTES:
1. SEE VOLUME 5 TUNNELS FOR CONTINUATION OF CONDUITS.



2791+50 2792+00 2793+00 2794+00 2795+00 2796+00 2797+00 2798+00

NO.	DATE	BY	CHECK/DESIGN	REVISION / SUBMITTAL

AECOM

90% SUBMISSION - 01/22/16

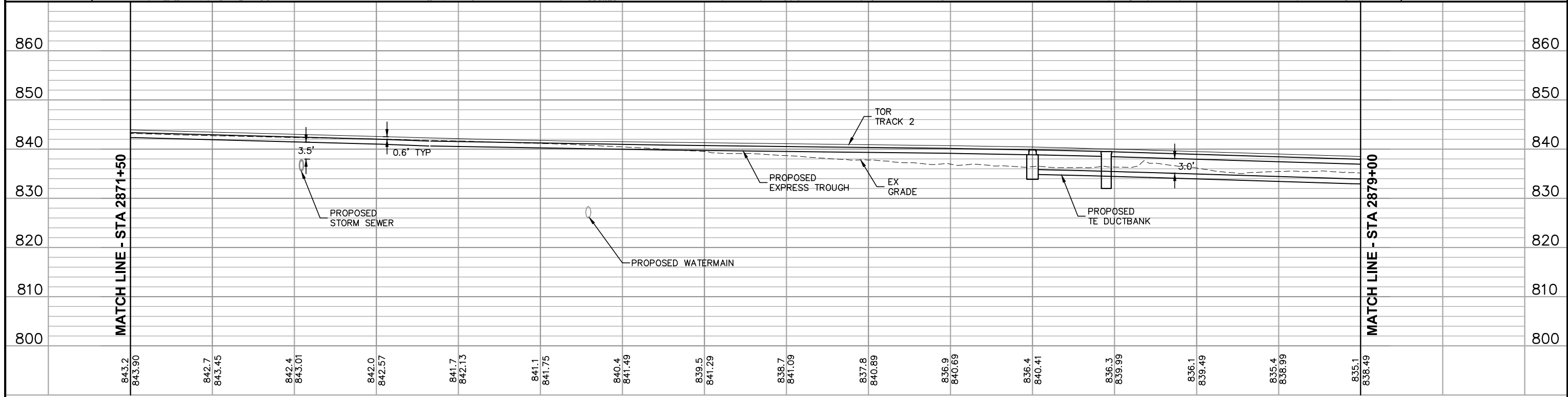
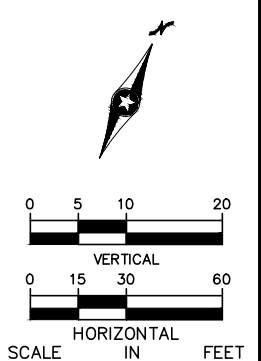
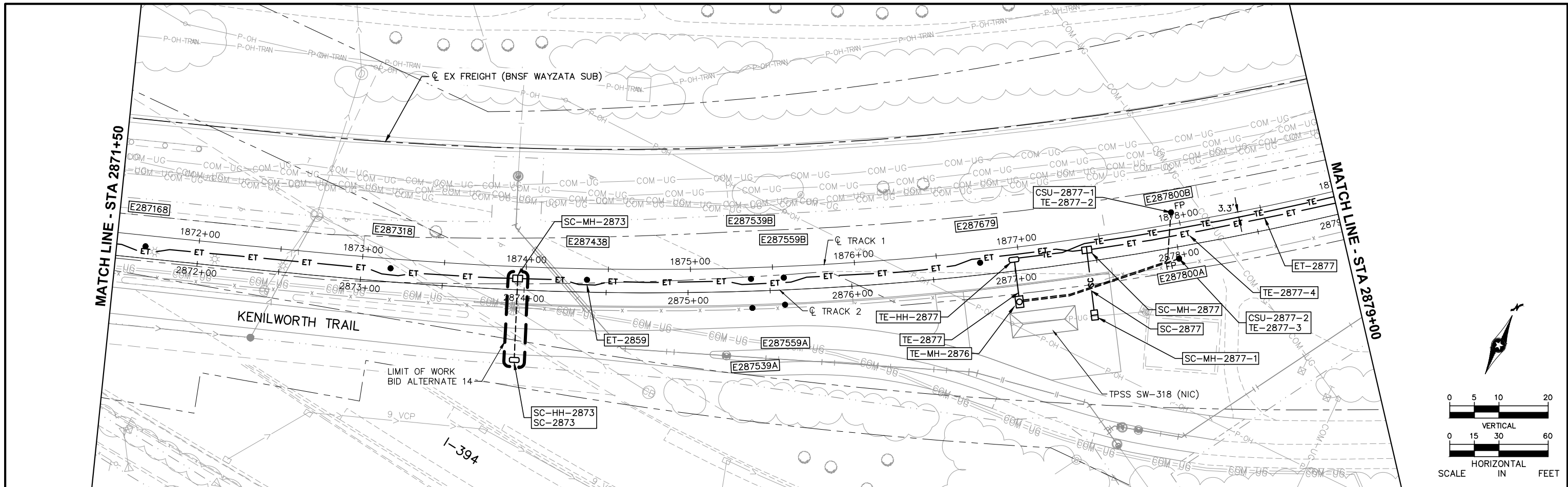



CIVIL (BA14)
SYSTEMWIDE ELECTRICAL
PLAN AND PROFILE
STA 2791+50 TO STA 2798+00

DISCIPLINE: **SYSTEMS** SHEET NAME: **E3-SYS-SWE-PRF-008-LRCI-027**

SHEET **26**
OF **33**

Jan, 18 2016 12:05 pm V:\3400_ADC\CAD\LRCI\027\PLAN SHEETS\E4-SYS-SWE-PRF-LRCI-027.dwg By: V-TranTT



NO.	DATE	BY	CHECK/DESIGN	REVISION / SUBMITTAL

90% SUBMISSION - 01/22/16

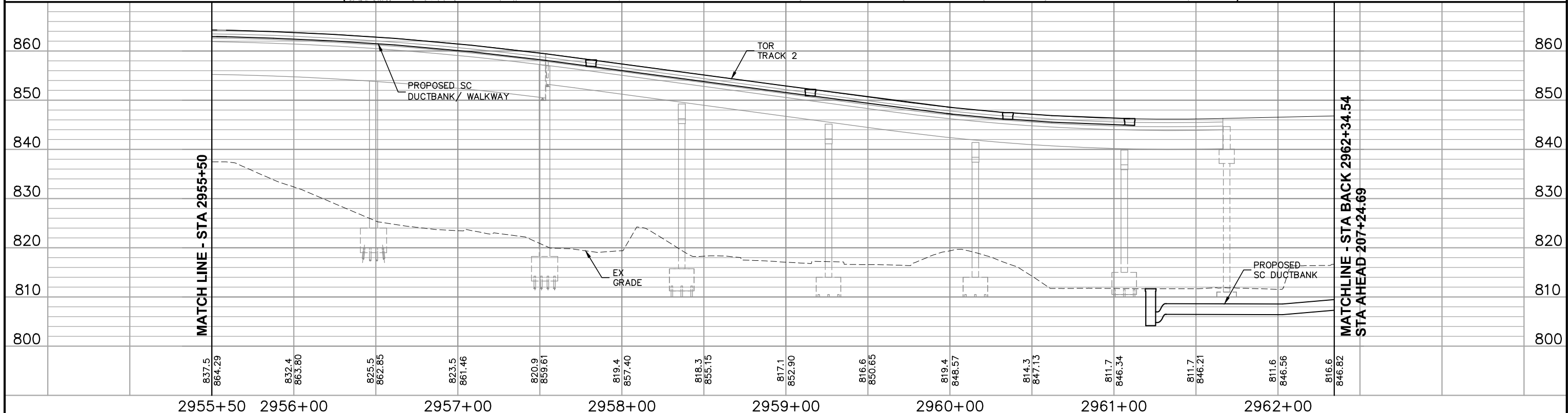
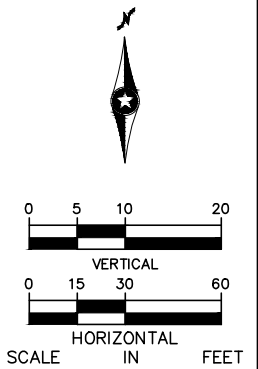
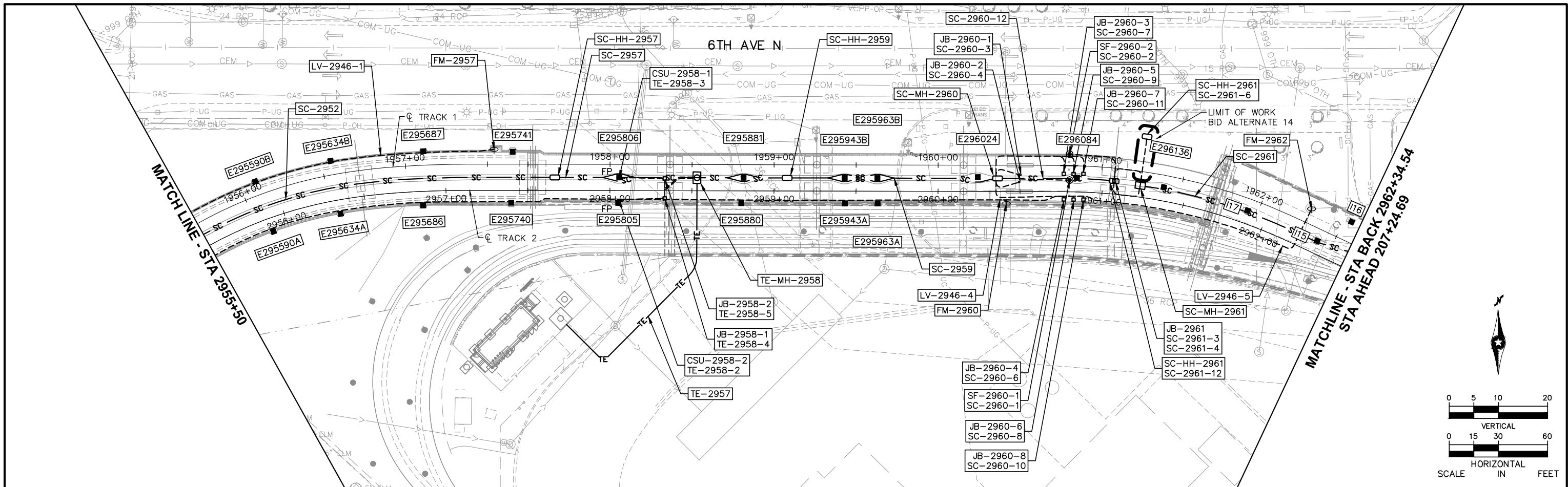
SOUTHWEST
Green Line Light Extension

CIVIL (BA14)
SYSTEMWIDE ELECTRICAL
PLAN AND PROFILE
STA 2871+50 TO STA 2879+00

DISCIPLINE: **SYSTEMS** SHEET NAME: **E4-SYS-SWE-PRF-006-LRCI-027**

SHEET
28
OF
33

Jan, 18 2016 12:09 pm V:\3400_ADC\CAD\LRCI\027\PLAN SHEETS\E4-SYS-SWE-PRF-LRCI-027.dwg By: V-TranTT



NO.	DATE	BY	CHECK	DESIGN	REVISION / SUBMITTAL



90% SUBMISSION - 01/22/16



CIVIL (BA14)
SYSTEMWIDE ELECTRICAL
PLAN AND PROFILE
STA 2955+50 TO STA 2962+34.54

DISCIPLINE: **SYSTEMS** SHEET NAME: **E4-SYS-SWE-PRF-019-LRCI-027**

SHEET 32 OF 33

